

Galactosidase alpha Rabbit mAb

Catalog No: #56651

Package Size: #56651-1 50ul #56651-2 100ul

Orders: order@signalwayantibody.comSupport: tech@signalwayantibody.com

Description

Product Name	Galactosidase alpha Rabbit mAb
Host Species	Rabbit
Clonality	Monoclonal
Isotype	Rabbit IgG
Purification	Affinity-chromatography
Applications	WB IHC ICC/IF IP FC
Species Reactivity	Human
Specificity	Galactosidase alpha Antibody detects endogenous levels of total Galactosidase alpha
Immunogen Description	A synthesized peptide derived from human Galactosidase alpha
Other Names	Alpha gal A; GALA; Galactosidase, alpha; GLA; Melibiase;
Accession No.	Uniprot:P06280
Calculated MW	46kDa
Formulation	Rabbit IgG in phosphate buffered saline , pH 7.4, 150mM NaCl, 0.02% sodium azide and 50% glycerol.
Storage	Store at +4°C short term. Store at -20°C long term. Avoid freeze / thaw cycle.

Application Details

WB:1:500~1:2000

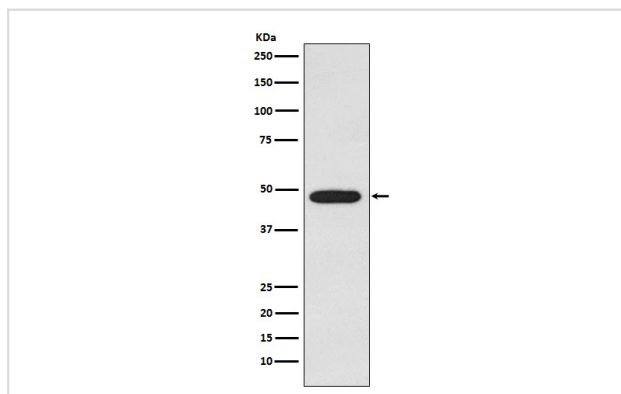
IHC:1:50~1:200

ICC/IF:1:50~1:200

IP:1:50

FC:1:80

Images



Western blot analysis of Galactosidase alpha expression in MCF-7 cell lysate.

Product Description

Defects in GLA are the cause of Fabry disease (FD) [MIM:301500]. FD is a rare X-linked sphingolipidosis disease where glycolipid accumulates in

many tissues. The disease consists of an inborn error of glycosphingolipid catabolism.

Note: This product is for in vitro research use only and is not intended for use in humans or animals.