

## TMPRSS2 Rabbit mAb

Catalog No: #56655

Package Size: #56655-1 50ul #56655-2 100ul

Orders: [order@signalwayantibody.com](mailto:order@signalwayantibody.com)Support: [tech@signalwayantibody.com](mailto:tech@signalwayantibody.com)

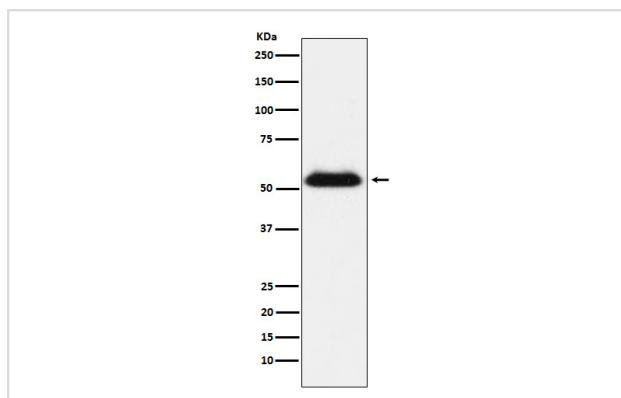
## Description

Product Name	TMPRSS2 Rabbit mAb
Host Species	Rabbit
Clonality	Monoclonal
Isotype	Rabbit IgG
Purification	Affinity-chromatography
Applications	WB IHC ICC/IF FC
Species Reactivity	Human Mouse Rat
Specificity	TMPRSS2 Antibody detects endogenous levels of total TMPRSS2
Immunogen Description	A synthesized peptide derived from human TMPRSS2
Other Names	Epitheliasin; PRSS10; TMPRSS2;
Accession No.	Uniprot:O15393
Calculated MW	54kDa
Formulation	Rabbit IgG in phosphate buffered saline , pH 7.4, 150mM NaCl, 0.02% sodium azide and 50% glycerol.
Storage	Store at +4°C short term. Store at -20°C long term. Avoid freeze / thaw cycle.

## Application Details

WB:1:500~1:2000IHC:1:100~1:500ICC/IF:1:100~1:500FC:1:60

## Images



Western blot analysis of TMPRSS2 expression in LNCaP cell lysate.

## Product Description

Serine protease that proteolytically cleaves and activates the viral spike glycoproteins which facilitate virus-cell membrane fusions; spike proteins are synthesized and maintained in precursor intermediate folding states and proteolysis permits the refolding and energy release required to create stable virus-cell linkages and membrane coalescence.

---

Note: This product is for in vitro research use only and is not intended for use in humans or animals.