

CAD Rabbit mAb

Catalog No: #56656



Package Size: #56656-1 50ul #56656-2 100ul

Orders: order@signalwayantibody.comSupport: tech@signalwayantibody.com

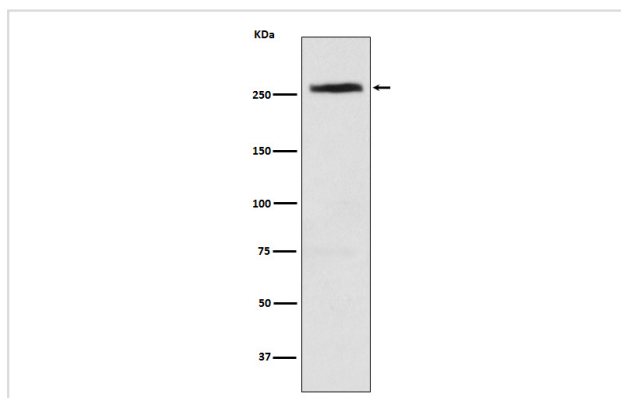
Description

Product Name	CAD Rabbit mAb
Host Species	Rabbit
Clonality	Monoclonal
Isotype	Rabbit IgG
Purification	Affinity-chromatography
Applications	WB ICC/IF IP FC
Species Reactivity	Human
Specificity	CAD Antibody detects endogenous levels of total CAD
Immunogen Description	A synthesized peptide derived from human CAD
Other Names	Aspartate transcarbamylase; CAD protein; CAD trifunctional protein; Carbamoyl phosphate synthetase 2; CPSase ATCase DHOase; Dihydroorotase;
Accession No.	Uniprot:P27708
Calculated MW	260kDa
Formulation	Rabbit IgG in phosphate buffered saline , pH 7.4, 150mM NaCl, 0.02% sodium azide and 50% glycerol.
Storage	Store at +4°C short term. Store at -20°C long term. Avoid freeze / thaw cycle.

Application Details

WB:1:500~1:1000 ICC/IF:1:50~1:200 IP:1:30 FC:1:80

Images



Western blot analysis of CAD expression in HeLa cell lysate.

Product Description

Carbamoyl phosphate synthetase-aspartate carbamoyltransferase-dihydroorotase (CAD) is a multifunctional protein that initiates and regulates mammalian de novo pyrimidine biosynthesis.

Note: This product is for in vitro research use only and is not intended for use in humans or animals.