

fetal hemoglobin Rabbit mAb

Catalog No: #56673



Package Size: #56673-1 50ul #56673-2 100ul

Orders: order@signalwayantibody.com

Support: tech@signalwayantibody.com

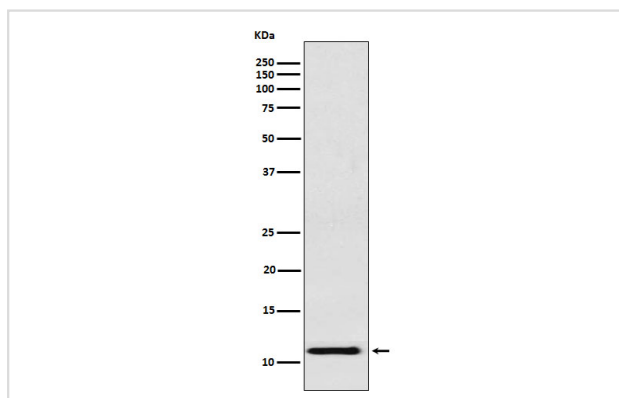
Description

Product Name	fetal hemoglobin Rabbit mAb
Host Species	Rabbit
Clonality	Monoclonal
Isotype	Rabbit IgG
Purification	Affinity-chromatography
Applications	WB
Species Reactivity	Human
Specificity	fetal hemoglobin Antibody detects endogenous levels of total fetal hemoglobin
Immunogen Description	A synthesized peptide derived from human fetal hemoglobin
Other Names	HBG1; HBG2; HBGA; HBGR; Hemoglobin gamma A; Hemoglobin gamma G; Hemoglobin subunit gamma 1; Hemoglobin subunit gamma 2; HSGGL1; PRO2979;
Accession No.	Uniprot:P69891/P69892
Calculated MW	12kDa
Formulation	Rabbit IgG in phosphate buffered saline , pH 7.4, 150mM NaCl, 0.02% sodium azide and 50% glycerol.
Storage	Store at +4°C short term. Store at -20°C long term. Avoid freeze / thaw cycle.

Application Details

WB: 1:500~1:2000

Images



Western blot analysis of fetal hemoglobin expression in K562 cell lysate.

Product Description

The gamma globin genes (HBG1 and HBG2) are normally expressed in the fetal liver, spleen and bone marrow. Two gamma chains together with two alpha chains constitute fetal hemoglobin (HbF) which is normally replaced by adult hemoglobin (HbA) at birth.

Note: This product is for in vitro research use only and is not intended for use in humans or animals.