

LIMP2 Rabbit mAb

Catalog No: #56675

Package Size: #56675-1 50ul #56675-2 100ul

Orders: order@signalwayantibody.comSupport: tech@signalwayantibody.com

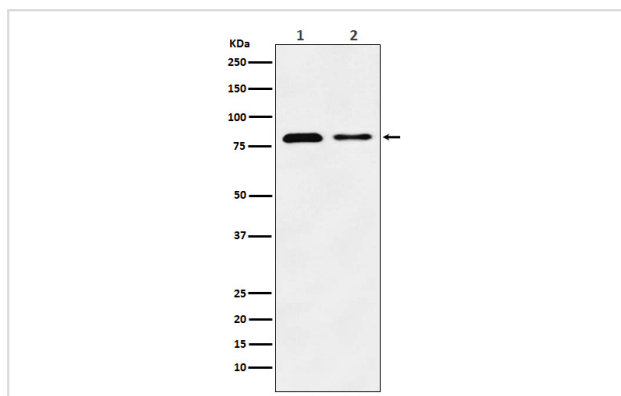
Description

Product Name	LIMP2 Rabbit mAb
Host Species	Rabbit
Clonality	Monoclonal
Isotype	Rabbit IgG
Purification	Affinity-chromatography
Applications	WB IHC IP FC
Species Reactivity	Human Mouse Rat
Specificity	LIMP2 Antibody detects endogenous levels of total LIMP2
Immunogen Description	A synthesized peptide derived from human LIMP2
Other Names	AMRF; CD36; CD36L2; EPM4; HLGP85; LGP85; LIMP2; LIMP2; Scarb2; SRBII;
Accession No.	Uniprot:Q14108
Calculated MW	77kDa
Formulation	Rabbit IgG in phosphate buffered saline , pH 7.4, 150mM NaCl, 0.02% sodium azide and 50% glycerol.
Storage	Store at +4°C short term. Store at -20°C long term. Avoid freeze / thaw cycle.

Application Details

WB:1:500~1:2000IHC:1:50~1:200IP:1:50FC:1:50

Images



Western blot analysis of LIMP2 expression in (1) HeLa cell lysate; (2) Mouse liver lysate.

Product Description

Acts as a lysosomal receptor for glucosylceramidase (GBA) targeting.

Note: This product is for in vitro research use only and is not intended for use in humans or animals.