

## KLRG1 Rabbit mAb

Catalog No: #56677

Package Size: #56677-1 50ul #56677-2 100ul

Orders: [order@signalwayantibody.com](mailto:order@signalwayantibody.com)Support: [tech@signalwayantibody.com](mailto:tech@signalwayantibody.com)

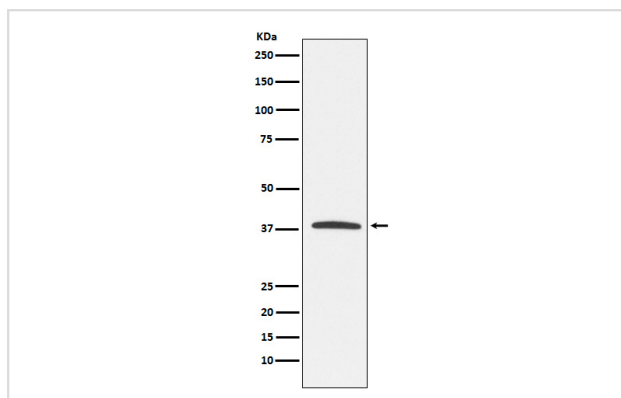
## Description

Product Name	KLRG1 Rabbit mAb
Host Species	Rabbit
Clonality	Monoclonal
Isotype	Rabbit IgG
Purification	Affinity-chromatography
Applications	WB
Species Reactivity	Human Mouse Rat
Specificity	KLRG1 Antibody detects endogenous levels of total KLRG1
Immunogen Description	A synthesized peptide derived from human KLRG1
Other Names	2F1 Ag; CLEC15A; KLRG1; MAFA 2F1; MAFA L; MAFA like; MAFAL;
Accession No.	Uniprot:Q96E93
Calculated MW	38kDa
Formulation	Rabbit IgG in phosphate buffered saline , pH 7.4, 150mM NaCl, 0.02% sodium azide and 50% glycerol.
Storage	Store at +4°C short term. Store at -20°C long term. Avoid freeze / thaw cycle.

## Application Details

WB: 1:500~1:2000

## Images



Western blot analysis of KLRG1 expression in Jurkat cell lysate.

## Product Description

Plays an inhibitory role on natural killer (NK) cells and T-cell functions upon binding to their non-MHC ligands. May mediate missing self recognition by binding to a highly conserved site on classical cadherins, enabling it to monitor expression of E-cadherin/CDH1, N-cadherin/CDH2 and R-cadherin/CDH4 on target cells.

---

Note: This product is for in vitro research use only and is not intended for use in humans or animals.