

SMCHD1 Rabbit mAb

Catalog No: #56679

Package Size: #56679-1 50ul #56679-2 100ul

Orders: order@signalwayantibody.com

Support: tech@signalwayantibody.com

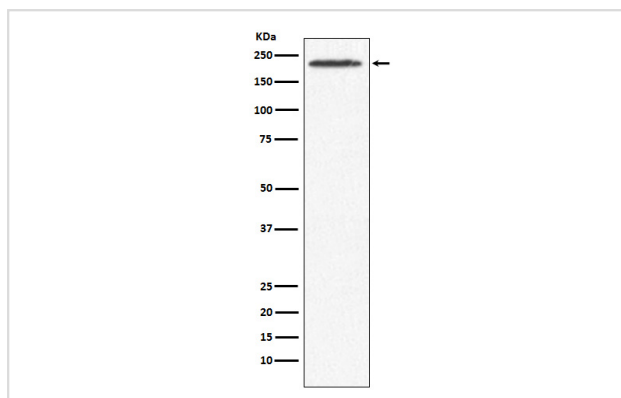
Description

Product Name	SMCHD1 Rabbit mAb
Host Species	Rabbit
Clonality	Monoclonal
Isotype	Rabbit IgG
Purification	Affinity-chromatography
Applications	WB IHC
Species Reactivity	Human
Specificity	SMCHD1 Antibody detects endogenous levels of total SMCHD1
Immunogen Description	A synthesized peptide derived from human SMCHD1
Other Names	BAMS; FSHD2; Smchd1;
Accession No.	Uniprot:A6NHR9
Calculated MW	226kDa
Formulation	Rabbit IgG in phosphate buffered saline , pH 7.4, 150mM NaCl, 0.02% sodium azide and 50% glycerol.
Storage	Store at +4°C short term. Store at -20°C long term. Avoid freeze / thaw cycle.

Application Details

WB:1:500~1:2000IHC:1:50~1:200

Images



Western blot analysis of SMCHD1 expression in 293T cell lysate.

Product Description

Required for maintenance of X inactivation in females and hypermethylation of CpG islands associated with inactive X. Involved in a pathway that mediates the methylation of a subset of CpG islands slowly and requires the methyltransferase DNMT3B (By similarity). Required for DUX4 silencing in somatic cells.

Note: This product is for in vitro research use only and is not intended for use in humans or animals.