

## THRA Rabbit mAb

Catalog No: #56680

Package Size: #56680-1 50ul #56680-2 100ul

Orders: [order@signalwayantibody.com](mailto:order@signalwayantibody.com)Support: [tech@signalwayantibody.com](mailto:tech@signalwayantibody.com)

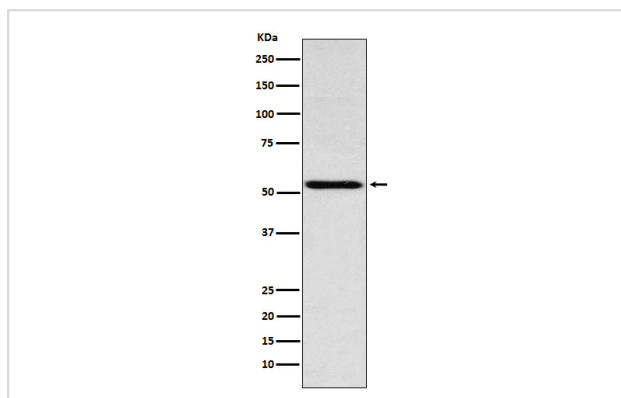
## Description

Product Name	THRA Rabbit mAb
Host Species	Rabbit
Clonality	Monoclonal
Isotype	Rabbit IgG
Purification	Affinity-chromatography
Applications	WB
Species Reactivity	Human
Specificity	THRA Antibody detects endogenous levels of total THRA
Immunogen Description	A synthesized peptide derived from human THRA
Other Names	AR7; CHNG6; EAR7; ERB-T-1; ERBA; ERBA1; NR1A1; THRA; THRA1; THRA2;
Accession No.	Uniprot:P10827
Calculated MW	55kDa
Formulation	Rabbit IgG in phosphate buffered saline , pH 7.4, 150mM NaCl, 0.02% sodium azide and 50% glycerol.
Storage	Store at +4°C short term. Store at -20°C long term. Avoid freeze / thaw cycle.

## Application Details

WB: 1:500~1:2000

## Images



Western blot analysis of THRA expression in Jurkat cell lysate.

## Product Description

Nuclear hormone receptor that can act as a repressor or activator of transcription. High affinity receptor for thyroid hormones, including triiodothyronine and thyroxine.

---

Note: This product is for in vitro research use only and is not intended for use in humans or animals.