

TIRAP Rabbit mAb

Catalog No: #56690

Package Size: #56690-1 50ul #56690-2 100ul

Orders: order@signalwayantibody.comSupport: tech@signalwayantibody.com

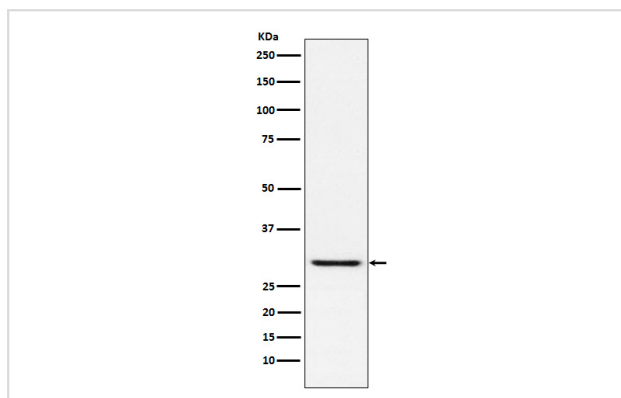
Description

Product Name	TIRAP Rabbit mAb
Host Species	Rabbit
Clonality	Monoclonal
Isotype	Rabbit IgG
Purification	Affinity-chromatography
Applications	WB
Species Reactivity	Human Mouse Rat
Specificity	TIRAP Antibody detects endogenous levels of total TIRAP
Immunogen Description	A synthesized peptide derived from human TIRAP
Other Names	MAL; Wyatt;
Accession No.	Uniprot:P58753
Calculated MW	28kDa
Formulation	Rabbit IgG in phosphate buffered saline , pH 7.4, 150mM NaCl, 0.02% sodium azide and 50% glycerol.
Storage	Store at +4°C short term. Store at -20°C long term. Avoid freeze / thaw cycle.

Application Details

WB: 1:500~1:2000

Images



Western blot analysis of TIRAP expression in HUVEC cell lysate.

Product Description

The Toll-like receptor (TLR) family in mammals comprises a family of transmembrane proteins characterized by multiple copies of leucine rich repeats in the extracellular domain and IL-1 receptor motif in the cytoplasmic domain. Like its counterparts in *Drosophila*, TLRs signal through adaptor molecules.

Note: This product is for in vitro research use only and is not intended for use in humans or animals.