

MAGE 1 Rabbit mAb

Catalog No: #56701

Package Size: #56701-1 50ul #56701-2 100ul

Orders: order@signalwayantibody.comSupport: tech@signalwayantibody.com

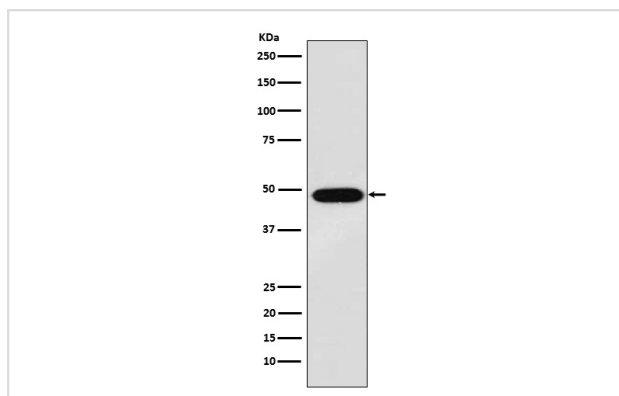
Description

Product Name	MAGE 1 Rabbit mAb
Host Species	Rabbit
Clonality	Monoclonal
Isotype	Rabbit IgG
Purification	Affinity-chromatography
Applications	WB ICC/IF FC
Species Reactivity	Human Mouse Rat
Specificity	MAGE 1 Antibody detects endogenous levels of total MAGE 1
Immunogen Description	A synthesized peptide derived from human MAGE 1
Other Names	CT1.1; MAGE1; MAGE1A; MAGEA1;
Accession No.	Uniprot:P43355
Calculated MW	46kDa
Formulation	Rabbit IgG in phosphate buffered saline , pH 7.4, 150mM NaCl, 0.02% sodium azide and 50% glycerol.
Storage	Store at +4°C short term. Store at -20°C long term. Avoid freeze / thaw cycle.

Application Details

WB:1:500~1:2000 ICC/IF:1:50~1:200 FC:1:50

Images



Western blot analysis of MAGE 1 expression in A375 cell lysate.

Product Description

May be involved in transcriptional regulation through interaction with SNW1 and recruiting histone deacetylase HDAC1. May inhibit notch intracellular domain (NICD) transactivation. May play a role in embryonal development and tumor transformation or aspects of tumor progression.

Note: This product is for in vitro research use only and is not intended for use in humans or animals.