

## ACM2 Rabbit mAb

Catalog No: #56702

Package Size: #56702-1 50ul #56702-2 100ul

Orders: [order@signalwayantibody.com](mailto:order@signalwayantibody.com)Support: [tech@signalwayantibody.com](mailto:tech@signalwayantibody.com)

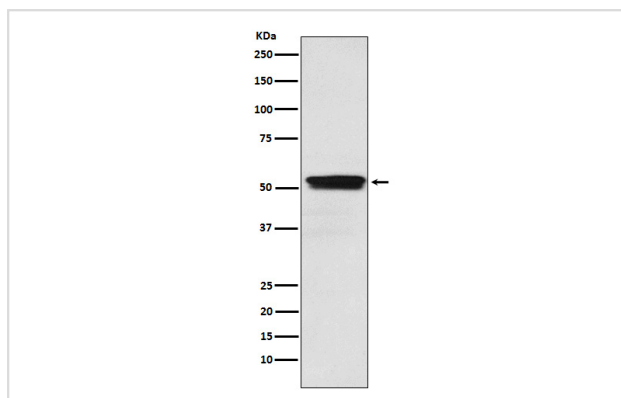
## Description

Product Name	ACM2 Rabbit mAb
Host Species	Rabbit
Clonality	Monoclonal
Isotype	Rabbit IgG
Purification	Affinity-chromatography
Applications	WB IHC IP
Species Reactivity	Human Mouse Rat
Specificity	ACM2 Antibody detects endogenous levels of total ACM2
Immunogen Description	A synthesized peptide derived from human ACM2
Other Names	CHRM2; HM2; AChR; Acm2;
Accession No.	Uniprot:P08172
Calculated MW	52kDa
Formulation	Rabbit IgG in phosphate buffered saline , pH 7.4, 150mM NaCl, 0.02% sodium azide and 50% glycerol.
Storage	Store at +4°C short term. Store at -20°C long term. Avoid freeze / thaw cycle.

## Application Details

WB:1:500~1:2000IHC:1:50~1:200IP:1:50

## Images



Western blot analysis of ACM2 expression in U87-MG cell lysate.

## Product Description

The muscarinic acetylcholine receptor mediates various cellular responses, including inhibition of adenylate cyclase, breakdown of phosphoinositides and modulation of potassium channels through the action of G proteins. Primary transducing effect is adenylate cyclase inhibition.

---

Note: This product is for in vitro research use only and is not intended for use in humans or animals.