

## ACHA4 Rabbit mAb

Catalog No: #56705

Package Size: #56705-1 50ul #56705-2 100ul

Orders: [order@signalwayantibody.com](mailto:order@signalwayantibody.com)Support: [tech@signalwayantibody.com](mailto:tech@signalwayantibody.com)

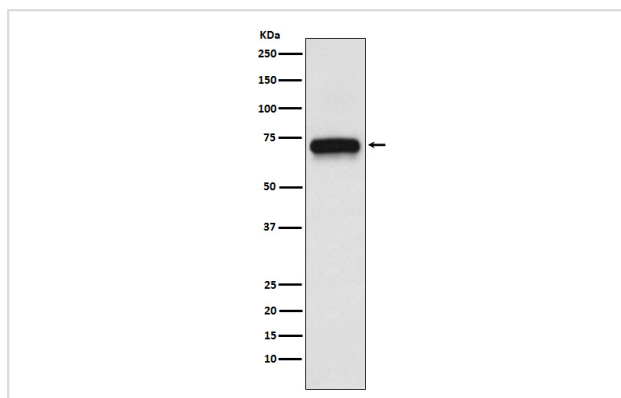
## Description

Product Name	ACHA4 Rabbit mAb
Host Species	Rabbit
Clonality	Monoclonal
Isotype	Rabbit IgG
Purification	Affinity-chromatography
Applications	WB IP
Species Reactivity	Human Mouse Rat
Specificity	ACHA4 Antibody detects endogenous levels of total ACHA4
Immunogen Description	A synthesized peptide derived from human ACHA4
Other Names	ACH4; AChR; Acra4; BFNC; CHRNA4; EBN; EBN1; NACHR; NACRA4;
Accession No.	Uniprot:P43681
Calculated MW	70kDa
Formulation	Rabbit IgG in phosphate buffered saline , pH 7.4, 150mM NaCl, 0.02% sodium azide and 50% glycerol.
Storage	Store at +4°C short term. Store at -20°C long term. Avoid freeze / thaw cycle.

## Application Details

WB:1:1000~1:5000IP:1:50

## Images



Western blot analysis of ACHA4 expression in SH-SY5Y cell lysate.

## Product Description

After binding acetylcholine, the AChR responds by an extensive change in conformation that affects all subunits and leads to opening of an ion-conducting channel across the plasma membrane.

---

Note: This product is for in vitro research use only and is not intended for use in humans or animals.