

VEGFB Rabbit mAb

Catalog No: #56706

Package Size: #56706-1 50ul #56706-2 100ul

Orders: order@signalwayantibody.com

Support: tech@signalwayantibody.com

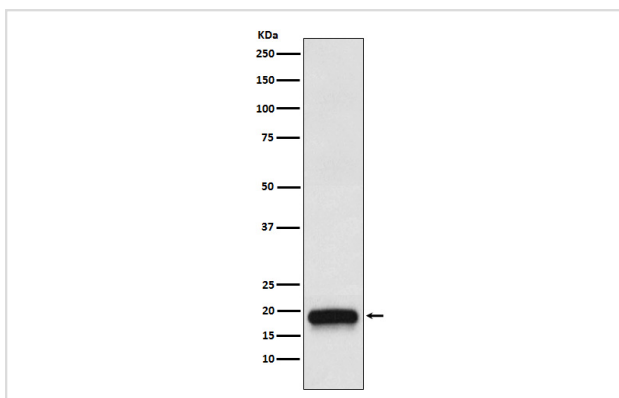
Description

Product Name	VEGFB Rabbit mAb
Host Species	Rabbit
Clonality	Monoclonal
Isotype	Rabbit IgG
Purification	Affinity-chromatography
Applications	WB
Species Reactivity	Human Mouse
Specificity	VEGFB Antibody detects endogenous levels of total VEGFB
Immunogen Description	A synthesized peptide derived from human VEGFB
Other Names	VEGF B; Vegfb; VEGFL; VRF;
Accession No.	Uniprot:P49765
Calculated MW	16-62kDa
Formulation	Rabbit IgG in phosphate buffered saline , pH 7.4, 150mM NaCl, 0.02% sodium azide and 50% glycerol.
Storage	Store at +4°C short term. Store at -20°C long term. Avoid freeze / thaw cycle.

Application Details

WB:1:500~1:2000

Images



Western blot analysis of VEGFB expression in 293T cell transfected with VEGFB recombinant protein.

Product Description

Growth factor for endothelial cells. VEGF-B167 binds heparin and neuropilin-1 whereas the binding to neuropilin-1 of VEGF-B186 is regulated by proteolysis.

Note: This product is for in vitro research use only and is not intended for use in humans or animals.