

EDD Rabbit mAb

Catalog No: #56707

Package Size: #56707-1 50ul #56707-2 100ul

Orders: order@signalwayantibody.comSupport: tech@signalwayantibody.com

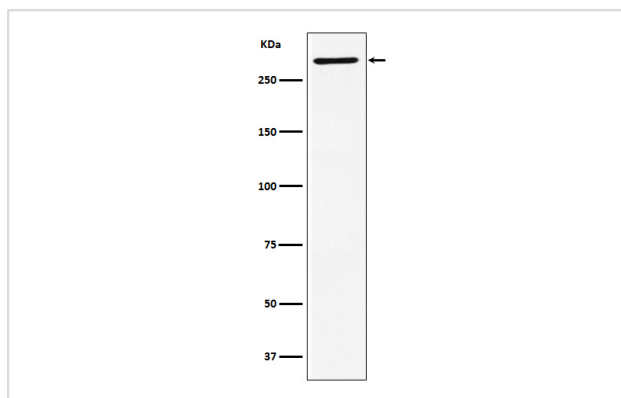
Description

Product Name	EDD Rabbit mAb
Host Species	Rabbit
Clonality	Monoclonal
Isotype	Rabbit IgG
Purification	Affinity-chromatography
Applications	WB
Species Reactivity	Human Mouse
Specificity	EDD Antibody detects endogenous levels of total EDD
Immunogen Description	A synthesized peptide derived from human EDD
Other Names	DD5; EDD; EDD1; hHYD; HYD; Rat100; Ubiquitin protein ligase; UBR5;
Accession No.	Uniprot:O95071
Calculated MW	309kDa
Formulation	Rabbit IgG in phosphate buffered saline , pH 7.4, 150mM NaCl, 0.02% sodium azide and 50% glycerol.
Storage	Store at +4°C short term. Store at -20°C long term. Avoid freeze / thaw cycle.

Application Details

WB:1:500~1:2000

Images



Western blot analysis of EDD expression in SH-SY5Y cell lysate.

Product Description

E3 ubiquitin-protein ligase which is a component of the N-end rule pathway. Recognizes and binds to proteins bearing specific amino-terminal residues that are destabilizing according to the N-end rule, leading to their ubiquitination and subsequent degradation (By similarity).

Note: This product is for in vitro research use only and is not intended for use in humans or animals.