

## RCC1 Rabbit mAb

Catalog No: #56714

Package Size: #56714-1 50ul #56714-2 100ul

Orders: [order@signalwayantibody.com](mailto:order@signalwayantibody.com)Support: [tech@signalwayantibody.com](mailto:tech@signalwayantibody.com)

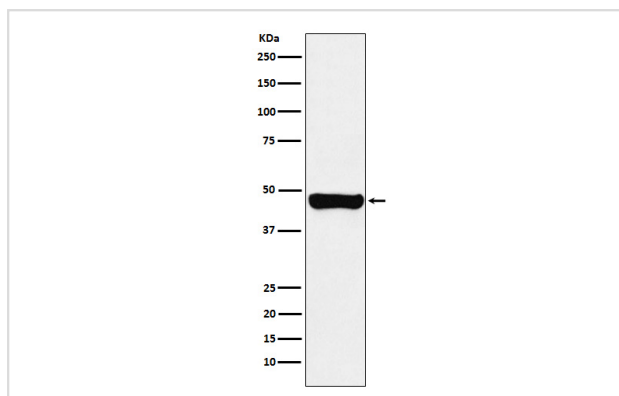
## Description

Product Name	RCC1 Rabbit mAb
Host Species	Rabbit
Clonality	Monoclonal
Isotype	Rabbit IgG
Purification	Affinity-chromatography
Applications	WB IHC ICC/IF IP FC
Species Reactivity	Human Mouse Rat
Specificity	RCC1 Antibody detects endogenous levels of total RCC1
Immunogen Description	A synthesized peptide derived from human RCC1
Other Names	RCC1; RCC1-I; SNHG3-RCC1; CHC1;
Accession No.	Uniprot:P18754
Calculated MW	45kDa
Formulation	Rabbit IgG in phosphate buffered saline , pH 7.4, 150mM NaCl, 0.02% sodium azide and 50% glycerol.
Storage	Store at +4°C short term. Store at -20°C long term. Avoid freeze / thaw cycle.

## Application Details

WB:1:500~1:2000IHC:1:50~1:200ICC/IF:1:100~1:500IP:1:50FC:1:500

## Images



Western blot analysis of RCC1 expression in A431 cell lysate.

## Product Description

Guanine-nucleotide releasing factor that promotes the exchange of Ran-bound GDP by GTP. Involved in the regulation of onset of chromosome condensation in the S phase. Binds both to the nucleosomes and double-stranded DNA.

---

Note: This product is for in vitro research use only and is not intended for use in humans or animals.