

ApoH Rabbit mAb

Catalog No: #56716

Package Size: #56716-1 50ul #56716-2 100ul

Orders: order@signalwayantibody.comSupport: tech@signalwayantibody.com

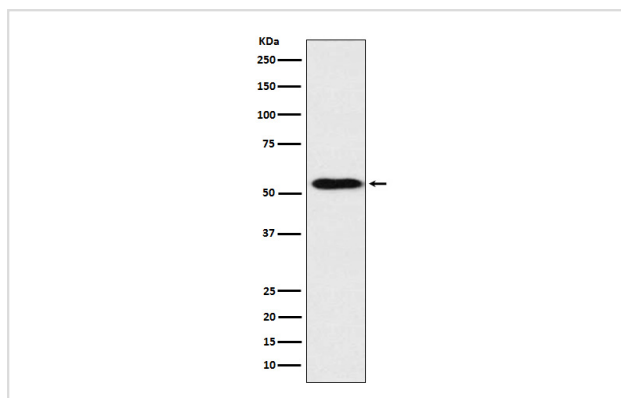
Description

Product Name	ApoH Rabbit mAb
Host Species	Rabbit
Clonality	Monoclonal
Isotype	Rabbit IgG
Purification	Affinity-chromatography
Applications	WB ICC/IF IP
Species Reactivity	Human Rat
Specificity	ApoH Antibody detects endogenous levels of total ApoH
Immunogen Description	A synthesized peptide derived from human ApoH
Other Names	APC inhibitor; APOH; Apolipoprotein H; B2G1; B2GP1; B2GPI; BG;
Accession No.	Uniprot:P02749
Calculated MW	55kDa
Formulation	Rabbit IgG in phosphate buffered saline , pH 7.4, 150mM NaCl, 0.02% sodium azide and 50% glycerol.
Storage	Store at +4°C short term. Store at -20°C long term. Avoid freeze / thaw cycle.

Application Details

WB:1:1000~1:5000|ICC/IF:1:50~1:200|IP:1:50

Images



Western blot analysis of ApoH expression in Human plasma lysate.

Product Description

Binds to various kinds of negatively charged substances such as heparin, phospholipids, and dextran sulfate. May prevent activation of the intrinsic blood coagulation cascade by binding to phospholipids on the surface of damaged cells.

Note: This product is for in vitro research use only and is not intended for use in humans or animals.