

## NR2E1 Rabbit mAb

Catalog No: #56717

Package Size: #56717-1 50ul #56717-2 100ul

Orders: [order@signalwayantibody.com](mailto:order@signalwayantibody.com)Support: [tech@signalwayantibody.com](mailto:tech@signalwayantibody.com)

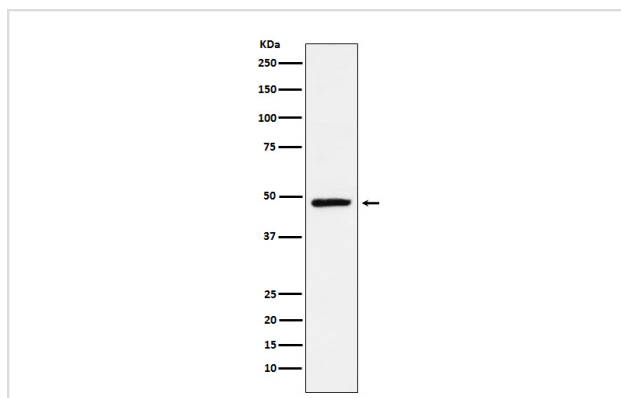
## Description

Product Name	NR2E1 Rabbit mAb
Host Species	Rabbit
Clonality	Monoclonal
Isotype	Rabbit IgG
Purification	Affinity-chromatography
Applications	WB
Species Reactivity	Human Mouse Rat
Specificity	NR2E1 Antibody detects endogenous levels of total NR2E1
Immunogen Description	A synthesized peptide derived from human NR2E1
Other Names	hTII; nr2e1; TII; TLX; XTLL;
Accession No.	Uniprot:Q9Y466
Calculated MW	48kDa
Formulation	Rabbit IgG in phosphate buffered saline , pH 7.4, 150mM NaCl, 0.02% sodium azide and 50% glycerol.
Storage	Store at +4°C short term. Store at -20°C long term. Avoid freeze / thaw cycle.

## Application Details

WB: 1:500~1:2000

## Images



Western blot analysis of NR2E1 / Tailless expression in SH-SY5Y cell lysate.

## Product Description

Orphan receptor that binds DNA as a monomer to hormone response elements (HRE) containing an extended core motif half-site sequence 5'-AAGGTCA-3' in which the 5' flanking nucleotides participate in determining receptor specificity.

---

Note: This product is for in vitro research use only and is not intended for use in humans or animals.