

## KIF4A Rabbit mAb

Catalog No: #56720

Package Size: #56720-1 50ul #56720-2 100ul

Orders: [order@signalwayantibody.com](mailto:order@signalwayantibody.com)Support: [tech@signalwayantibody.com](mailto:tech@signalwayantibody.com)

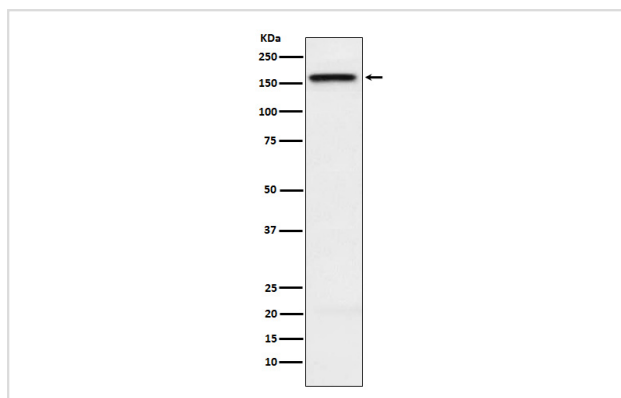
## Description

Product Name	KIF4A Rabbit mAb
Host Species	Rabbit
Clonality	Monoclonal
Isotype	Rabbit IgG
Purification	Affinity-chromatography
Applications	WB FC
Species Reactivity	Human Mouse
Specificity	KIF4A Antibody detects endogenous levels of total KIF4A
Immunogen Description	A synthesized peptide derived from human KIF4A
Other Names	Chromokinesin; KIF4; KIF4 G1; KIF4A; KIF4G1;
Accession No.	Uniprot:O95239
Calculated MW	150kDa
Formulation	Rabbit IgG in phosphate buffered saline , pH 7.4, 150mM NaCl, 0.02% sodium azide and 50% glycerol.
Storage	Store at +4°C short term. Store at -20°C long term. Avoid freeze / thaw cycle.

## Application Details

WB:1:500~1:2000FC:1:100

## Images



Western blot analysis of KIF4A expression in HeLa cell lysate.

## Product Description

Motor protein that translocates PRC1 to the plus ends of interdigitating spindle microtubules during the metaphase to anaphase transition, an essential step for the formation of an organized central spindle midzone and midbody and for successful cytokinesis.

---

Note: This product is for in vitro research use only and is not intended for use in humans or animals.