

LEFTY1 + LEFTY2 Rabbit mAb

Catalog No: #56722

Package Size: #56722-1 50ul #56722-2 100ul

Orders: order@signalwayantibody.com

Support: tech@signalwayantibody.com

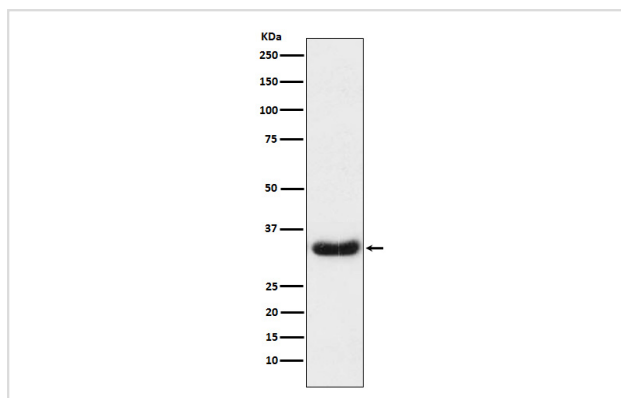
Description

Product Name	LEFTY1 + LEFTY2 Rabbit mAb
Host Species	Rabbit
Clonality	Monoclonal
Isotype	Rabbit IgG
Purification	Affinity-chromatography
Applications	WB IP
Species Reactivity	Human Mouse Rat
Specificity	LEFTY1 + LEFTY2 Antibody detects endogenous levels of total LEFTY1 + LEFTY2
Immunogen Description	A synthesized peptide derived from human LEFTY1 + LEFTY2
Other Names	EBAF; LEFTA; LEFTB; LEFTY1; LEFTYA; LEFTYB; PSEC0024; TGFB4;
Accession No.	Uniprot:O00292
Calculated MW	34.44kDa
Formulation	Rabbit IgG in phosphate buffered saline , pH 7.4, 150mM NaCl, 0.02% sodium azide and 50% glycerol.
Storage	Store at +4°C short term. Store at -20°C long term. Avoid freeze / thaw cycle.

Application Details

WB:1:1000~1:5000IP:1:50

Images



Western blot analysis of LEFTY1 + LEFTY2 expression in Caco2 cell lysate.

Product Description

Function for LEFTY1: Required for left-right axis determination as a regulator of LEFTY2 and NODAL. Function for LEFTY2: Required for left-right (L-R) asymmetry determination of organ systems in mammals. May play a role in endometrial bleeding.

Note: This product is for in vitro research use only and is not intended for use in humans or animals.