

## Glucokinase Rabbit mAb

Catalog No: #56725



Package Size: #56725-1 50ul #56725-2 100ul

Orders: [order@signalwayantibody.com](mailto:order@signalwayantibody.com)Support: [tech@signalwayantibody.com](mailto:tech@signalwayantibody.com)

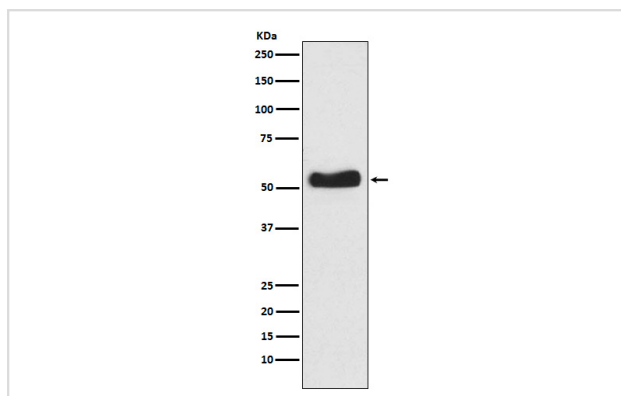
## Description

Product Name	Glucokinase Rabbit mAb
Host Species	Rabbit
Clonality	Monoclonal
Isotype	Rabbit IgG
Purification	Affinity-chromatography
Applications	WB
Species Reactivity	Human
Specificity	Glucokinase Antibody detects endogenous levels of total Glucokinase
Immunogen Description	A synthesized peptide derived from human Glucokinase
Other Names	GCK; GK; GLK; Glucokinase; HHF3; HK IV; HK4; HKIV; HXKP; LGLK; MODY2;
Accession No.	Uniprot:P35557
Calculated MW	52kDa
Formulation	Rabbit IgG in phosphate buffered saline , pH 7.4, 150mM NaCl, 0.02% sodium azide and 50% glycerol.
Storage	Store at +4°C short term. Store at -20°C long term. Avoid freeze / thaw cycle.

## Application Details

WB: 1:500~1:2000

## Images



Western blot analysis of Glucokinase expression in BxPC-3 cell lysate.

## Product Description

Catalyzes the initial step in utilization of glucose by the beta-cell and liver at physiological glucose concentration. Glucokinase has a high  $K_m$  for glucose, and so it is effective only when glucose is abundant. The role of GCK is to provide G6P for the synthesis of glycogen.

---

Note: This product is for in vitro research use only and is not intended for use in humans or animals.