

## STC1 Rabbit mAb

Catalog No: #56740

Package Size: #56740-1 50ul #56740-2 100ul

Orders: order@signalwayantibody.com

Support: tech@signalwayantibody.com

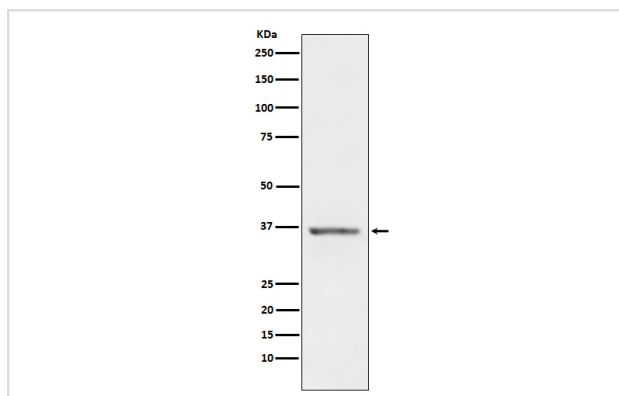
## Description

Product Name	STC1 Rabbit mAb
Host Species	Rabbit
Clonality	Monoclonal
Isotype	Rabbit IgG
Purification	Affinity-chromatography
Applications	WB IP
Species Reactivity	Human
Specificity	STC1 Antibody detects endogenous levels of total STC1
Immunogen Description	A synthesized peptide derived from human STC1
Other Names	Stanniocalcin; STC; STC-1; Stc1;
Accession No.	Uniprot:P52823
Calculated MW	31-37kDa
Formulation	Rabbit IgG in phosphate buffered saline , pH 7.4, 150mM NaCl, 0.02% sodium azide and 50% glycerol.
Storage	Store at +4°C short term. Store at -20°C long term. Avoid freeze / thaw cycle.

## Application Details

WB:1:500~1:200IP:1:50

## Images



Western blot analysis of STC1 expression in Human Prostate lysate.

## Product Description

Stimulates renal phosphate reabsorption, and could therefore prevent hypercalcemia.

---

Note: This product is for in vitro research use only and is not intended for use in humans or animals.