

## LHX3 Rabbit mAb

Catalog No: #56743

Package Size: #56743-1 50ul #56743-2 100ul

Orders: order@signalwayantibody.com

Support: tech@signalwayantibody.com

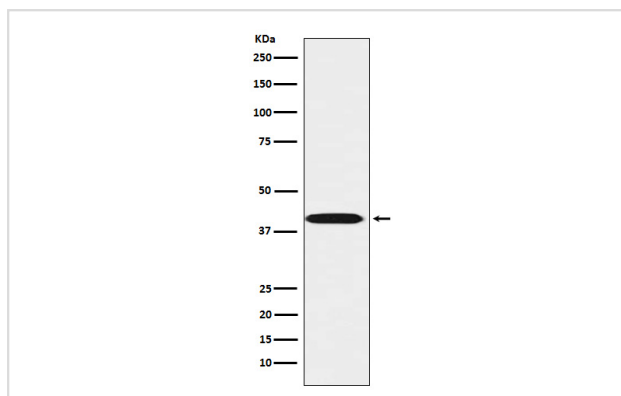
## Description

Product Name	LHX3 Rabbit mAb
Host Species	Rabbit
Clonality	Monoclonal
Isotype	Rabbit IgG
Purification	Affinity-chromatography
Applications	WB IP FC
Species Reactivity	Human Mouse Rat
Specificity	LHX3 Antibody detects endogenous levels of total LHX3
Immunogen Description	A synthesized peptide derived from human LHX3
Other Names	CPHD3; LHX3; Lim3; M2 LHX3; mLim-3; mLIM3; P LIM;
Accession No.	Uniprot:Q9UBR4
Calculated MW	43kDa
Formulation	Rabbit IgG in phosphate buffered saline , pH 7.4, 150mM NaCl, 0.02% sodium azide and 50% glycerol.
Storage	Store at +4°C short term. Store at -20°C long term. Avoid freeze / thaw cycle.

## Application Details

WB:1:500~1:2000IP:1:50FC:1:50

## Images



Western blot analysis of LHX3 expression in Jurkat cell lysate.

## Product Description

Acts as a transcriptional activator. Binds to and activates the promoter of the alpha-glycoprotein gene, and synergistically enhances transcription from the prolactin promoter in cooperation with Pit-1.

---

Note: This product is for in vitro research use only and is not intended for use in humans or animals.