

RAD52 Rabbit mAb

Catalog No: #56747

Package Size: #56747-1 50ul #56747-2 100ul

Orders: order@signalwayantibody.comSupport: tech@signalwayantibody.com

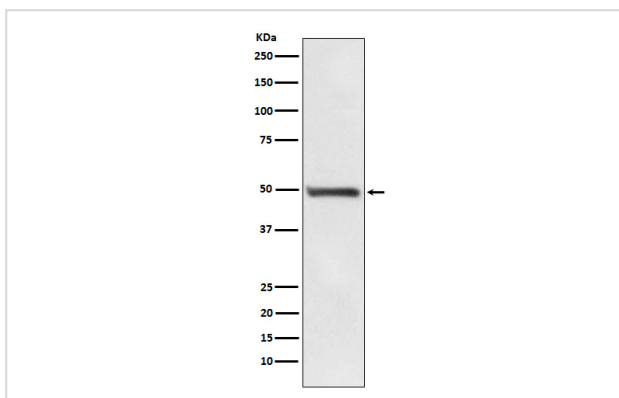
Description

Product Name	RAD52 Rabbit mAb
Host Species	Rabbit
Clonality	Monoclonal
Isotype	Rabbit IgG
Purification	Affinity-chromatography
Applications	WB
Species Reactivity	Human
Specificity	RAD52 Antibody detects endogenous levels of total RAD52
Immunogen Description	A synthesized peptide derived from human RAD52
Other Names	Rad52; RAD52 homolog;
Accession No.	Uniprot:P43351
Calculated MW	48kDa
Formulation	Rabbit IgG in phosphate buffered saline , pH 7.4, 150mM NaCl, 0.02% sodium azide and 50% glycerol.
Storage	Store at +4°C short term. Store at -20°C long term. Avoid freeze / thaw cycle.

Application Details

WB: 1:500~1:2000

Images



Western blot analysis of RAD52 expression in PC3 cell lysate.

Product Description

Involved in double-stranded break repair. Plays a central role in genetic recombination and DNA repair by promoting the annealing of complementary single-stranded DNA and by stimulation of the RAD51 recombinase.

Note: This product is for in vitro research use only and is not intended for use in humans or animals.