

## FRA2 Rabbit mAb

Catalog No: #56748

Package Size: #56748-1 50ul #56748-2 100ul

Orders: [order@signalwayantibody.com](mailto:order@signalwayantibody.com)Support: [tech@signalwayantibody.com](mailto:tech@signalwayantibody.com)

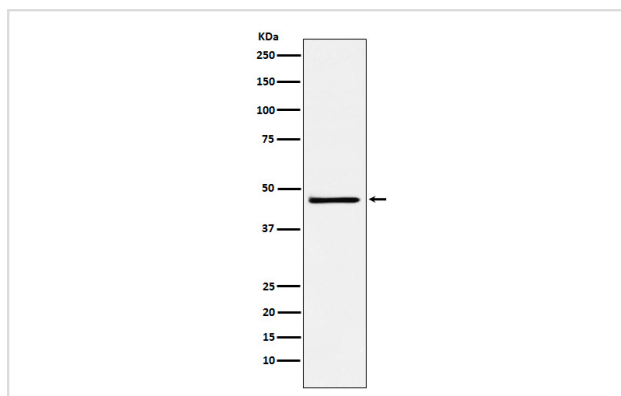
## Description

Product Name	FRA2 Rabbit mAb
Host Species	Rabbit
Clonality	Monoclonal
Isotype	Rabbit IgG
Purification	Affinity-chromatography
Applications	WB IP FC
Species Reactivity	Human Mouse Rat
Specificity	FRA2 Antibody detects endogenous levels of total FRA2
Immunogen Description	A synthesized peptide derived from human FRA2
Other Names	Fos L2; Fosl2; FRA 2;
Accession No.	Uniprot:P15408
Calculated MW	45kDa
Formulation	Rabbit IgG in phosphate buffered saline , pH 7.4, 150mM NaCl, 0.02% sodium azide and 50% glycerol.
Storage	Store at +4°C short term. Store at -20°C long term. Avoid freeze / thaw cycle.

## Application Details

WB:1:500~1:2000IP:1:50FC:1:100

## Images



Western blot analysis of FRA2 expression in NCCIT cell lysate.

## Product Description

Controls osteoclast survival and size (By similarity). As a dimer with JUN, activates LIF transcription (By similarity). Activates CEBPB transcription in PGE2-activated osteoblasts.

---

Note: This product is for in vitro research use only and is not intended for use in humans or animals.