

UBE2C Rabbit mAb

Catalog No: #56758

Package Size: #56758-1 50ul #56758-2 100ul

Orders: order@signalwayantibody.com

Support: tech@signalwayantibody.com

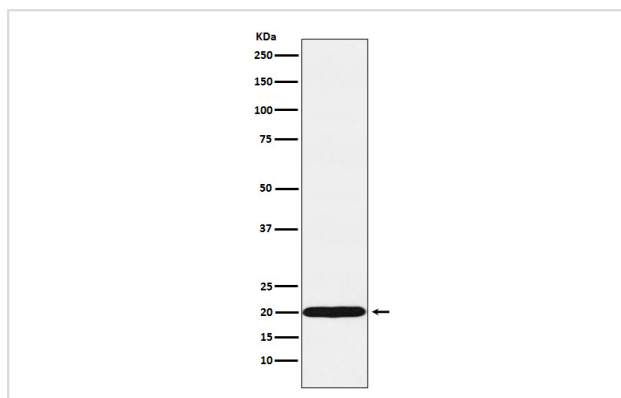
Description

Product Name	UBE2C Rabbit mAb
Host Species	Rabbit
Clonality	Monoclonal
Isotype	Rabbit IgG
Purification	Affinity-chromatography
Applications	WB
Species Reactivity	Human
Specificity	UBE2C Antibody detects endogenous levels of total UBE2C
Immunogen Description	A synthesized peptide derived from human UBE2C
Other Names	UBCH 10; Ubch10; Ube2c;
Accession No.	Uniprot:O00762
Calculated MW	20kDa
Formulation	Rabbit IgG in phosphate buffered saline , pH 7.4, 150mM NaCl, 0.02% sodium azide and 50% glycerol.
Storage	Store at +4°C short term. Store at -20°C long term. Avoid freeze / thaw cycle.

Application Details

WB:1:500~1:2000

Images



Western blot analysis of UBE2C expression in MCF7 cell lysate.

Product Description

Accepts ubiquitin from the E1 complex and catalyzes its covalent attachment to other proteins. In vitro catalyzes 'Lys-11'- and 'Lys-48'-linked polyubiquitination. Acts as an essential factor of the anaphase promoting complex/cyclosome (APC/C), a cell cycle-regulated ubiquitin ligase that controls progression through mitosis.

Note: This product is for in vitro research use only and is not intended for use in humans or animals.