

M6PR Rabbit mAb

Catalog No: #56759

Package Size: #56759-1 50ul #56759-2 100ul

Orders: order@signalwayantibody.com

Support: tech@signalwayantibody.com

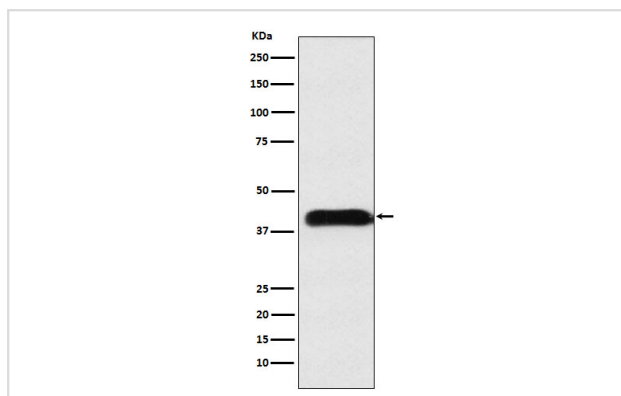
Description

Product Name	M6PR Rabbit mAb
Host Species	Rabbit
Clonality	Monoclonal
Isotype	Rabbit IgG
Purification	Affinity-chromatography
Applications	WB ICC/IF FC
Species Reactivity	Human Mouse Rat
Specificity	M6PR Antibody detects endogenous levels of total M6PR
Immunogen Description	A synthesized peptide derived from human M6PR
Other Names	CD MPR; M6pr; Man6PR; MPR46; MPRD; SMPR;
Accession No.	Uniprot:P20645
Calculated MW	42kDa
Formulation	Rabbit IgG in phosphate buffered saline , pH 7.4, 150mM NaCl, 0.02% sodium azide and 50% glycerol.
Storage	Store at +4°C short term. Store at -20°C long term. Avoid freeze / thaw cycle.

Application Details

WB:1:500~1:2000 ICC/IF:1:50~1:200 FC:1:50

Images



Western blot analysis of M6PR expression in A549 cell lysate.

Product Description

Transport of phosphorylated lysosomal enzymes from the Golgi complex and the cell surface to lysosomes. Lysosomal enzymes bearing phosphomannosyl residues bind specifically to mannose-6-phosphate receptors in the Golgi apparatus and the resulting receptor-ligand complex is transported to an acidic prelysosomal compartment where the low pH mediates the dissociation of the complex.

Note: This product is for in vitro research use only and is not intended for use in humans or animals.