

CSK Rabbit mAb

Catalog No: #56762

Package Size: #56762-1 50ul #56762-2 100ul

Orders: order@signalwayantibody.com

Support: tech@signalwayantibody.com

Description

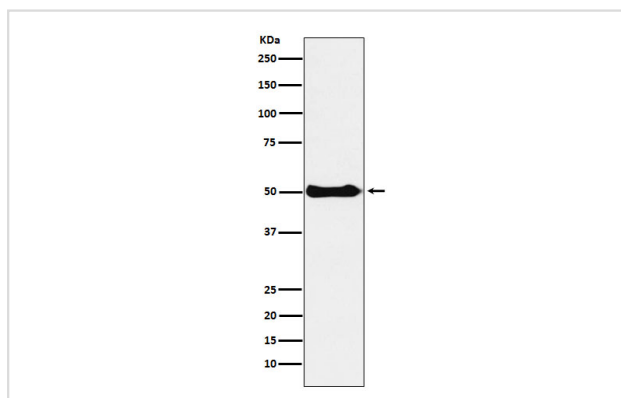
Product Name	CSK Rabbit mAb
Host Species	Rabbit
Clonality	Monoclonal
Isotype	Rabbit IgG
Purification	Affinity-chromatography
Applications	WB IHC
Species Reactivity	Human Mouse Rat
Specificity	CSK Antibody detects endogenous levels of total CSK
Immunogen Description	A synthesized peptide derived from human CSK
Other Names	C SRC; Csk A; CSK; P60 Src;
Accession No.	Uniprot:P41240
Calculated MW	50kDa
Formulation	Rabbit IgG in phosphate buffered saline , pH 7.4, 150mM NaCl, 0.02% sodium azide and 50% glycerol.
Storage	Store at +4°C short term. Store at -20°C long term. Avoid freeze / thaw cycle.

Application Details

WB:1:500~1:2000

IHC:1:50~1:200

Images



Western blot analysis of CSK expression in Ramos cell lysate.

Product Description

Specifically phosphorylates 'Tyr-504' on LCK, which acts as a negative regulatory site. Can also act on the LYN and FYN kinases.

Note: This product is for in vitro research use only and is not intended for use in humans or animals.