

# IL12 p40 Rabbit mAb

Catalog No: #56767



Package Size: #56767-1 50ul #56767-2 100ul

Orders: [order@signalwayantibody.com](mailto:order@signalwayantibody.com)

Support: [tech@signalwayantibody.com](mailto:tech@signalwayantibody.com)

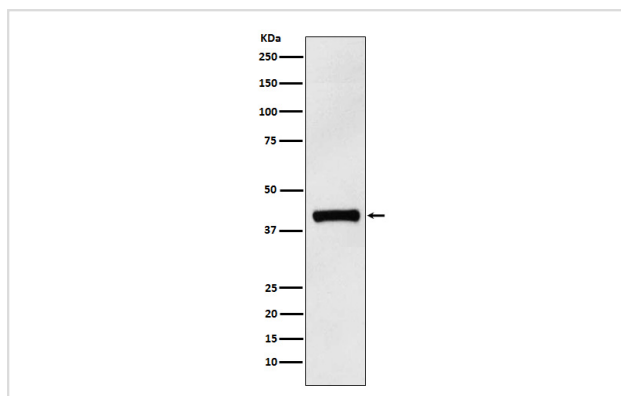
## Description

Product Name	IL12 p40 Rabbit mAb
Host Species	Rabbit
Clonality	Monoclonal
Isotype	Rabbit IgG
Purification	Affinity-chromatography
Applications	WB
Species Reactivity	Human
Specificity	IL12 p40 Antibody detects endogenous levels of total IL12 p40
Immunogen Description	A synthesized peptide derived from human IL12 p40
Other Names	CLMF; CLMF p40; CLMF2; IL12B; NKSF; NKSF2;
Accession No.	Uniprot:P29460
Calculated MW	40kDa
Formulation	Rabbit IgG in phosphate buffered saline , pH 7.4, 150mM NaCl, 0.02% sodium azide and 50% glycerol.
Storage	Store at +4°C short term. Store at -20°C long term. Avoid freeze / thaw cycle.

## Application Details

WB: 1:500~1:2000

## Images



Western blot analysis of IL12 p40 expression in Human IL12 p40 recombinant protein.

## Product Description

Cytokine that can act as a growth factor for activated T and NK cells, enhance the lytic activity of NK/lymphokine-activated killer cells, and stimulate the production of IFN-gamma by resting PBMC.

---

Note: This product is for in vitro research use only and is not intended for use in humans or animals.