

## Cystatin A Rabbit mAb

Catalog No: #56770



Package Size: #56770-1 50ul #56770-2 100ul

Orders: order@signalwayantibody.com

Support: tech@signalwayantibody.com

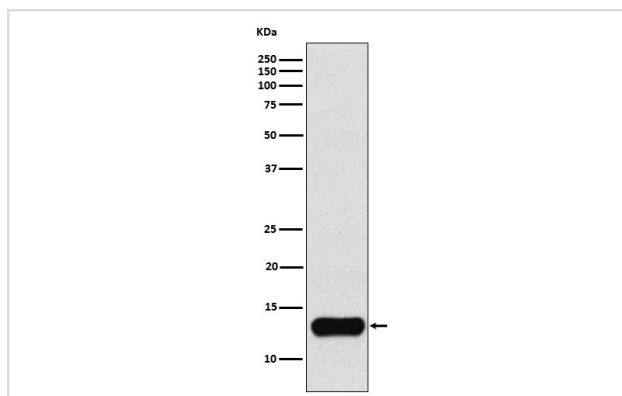
## Description

Product Name	Cystatin A Rabbit mAb
Host Species	Rabbit
Clonality	Monoclonal
Isotype	Rabbit IgG
Purification	Affinity-chromatography
Applications	WB FC
Species Reactivity	Human Mouse Rat
Specificity	Cystatin A Antibody detects endogenous levels of total Cystatin A
Immunogen Description	A synthesized peptide derived from human Cystatin A
Other Names	AREI; cstA; Cystatin A; Cystatin AS; Stefin A; STF1; STFA;
Accession No.	Uniprot:P01040
Calculated MW	13kDa
Formulation	Rabbit IgG in phosphate buffered saline , pH 7.4, 150mM NaCl, 0.02% sodium azide and 50% glycerol.
Storage	Store at +4°C short term. Store at -20°C long term. Avoid freeze / thaw cycle.

## Application Details

WB:1:500~1:2000FC:1:50

## Images



Western blot analysis of Cystatin A expression in K562 cell lysate.

## Product Description

This is an intracellular thiol proteinase inhibitor.

---

Note: This product is for in vitro research use only and is not intended for use in humans or animals.