

## IRF4 Rabbit mAb

Catalog No: #56774

Package Size: #56774-1 50ul #56774-2 100ul

Orders: order@signalwayantibody.com

Support: tech@signalwayantibody.com

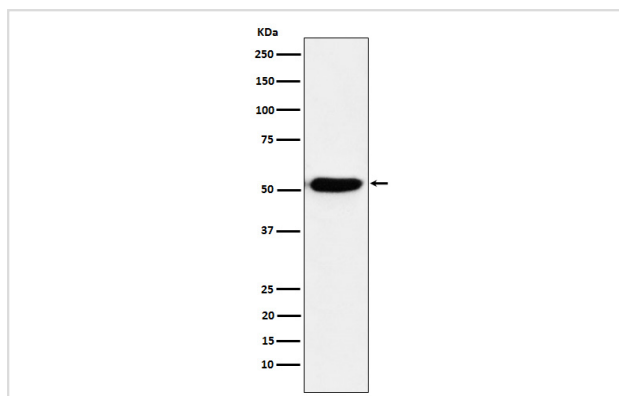
## Description

|                       |  |
|-----------------------|--|
| Product Name          | IRF4 Rabbit mAb  |
| Host Species          | Rabbit   |
| Clonality             | Monoclonal   |
| Isotype               | Rabbit IgG   |
| Purification          | Affinity-chromatography  |
| Applications          | WB IHC IP  |
| Species Reactivity    | Human  |
| Specificity           | IRF4 Antibody detects endogenous levels of total IRF4  |
| Immunogen Description | A synthesized peptide derived from human IRF4  |
| Other Names           | Interferon regulatory factor 4; Irf4; LSIRF; MUM1; NFEM5;  |
| Accession No.         | Uniprot:Q15306   |
| Calculated MW         | 52kDa  |
| Formulation           | Rabbit IgG in phosphate buffered saline , pH 7.4, 150mM NaCl, 0.02% sodium azide and 50% glycerol. |
| Storage               | Store at +4°C short term. Store at -20°C long term. Avoid freeze / thaw cycle.                     |

## Application Details

WB:1:500~1:2000IHC:1:50~1:200IP:1:50

## Images



Western blot analysis of IRF4 expression in Ramos cell lysate.

## Product Description

Transcriptional activator. Binds to the interferon-stimulated response element (ISRE) of the MHC class I promoter. Binds the immunoglobulin lambda light chain enhancer, together with PU.1. Probably plays a role in ISRE-targeted signal transduction mechanisms specific to lymphoid cells.

---

Note: This product is for in vitro research use only and is not intended for use in humans or animals.