

SENP2 Rabbit mAb

Catalog No: #56775



Package Size: #56775-1 50ul #56775-2 100ul

Orders: order@signalwayantibody.comSupport: tech@signalwayantibody.com

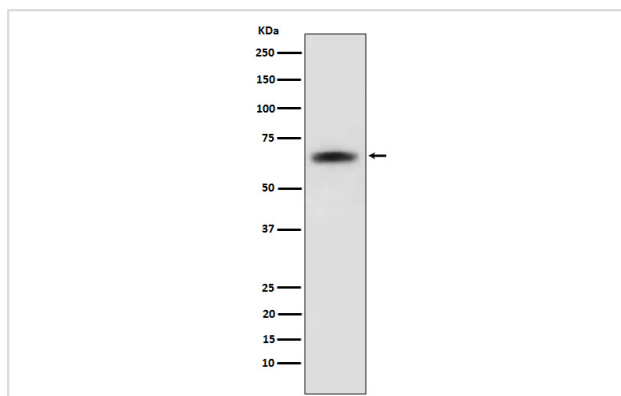
Description

Product Name	SENP2 Rabbit mAb
Host Species	Rabbit
Clonality	Monoclonal
Isotype	Rabbit IgG
Purification	Affinity-chromatography
Applications	WB IHC ICC/IF
Species Reactivity	Human
Specificity	SENP2 Antibody detects endogenous levels of total SENP2
Immunogen Description	A synthesized peptide derived from human SENP2
Other Names	Axam2; Senp2; Sentrin specific protease 2; SMT3 specific isopeptidase 2; Smt3ip2;
Accession No.	Uniprot:Q9HC62
Calculated MW	68kDa
Formulation	Rabbit IgG in phosphate buffered saline , pH 7.4, 150mM NaCl, 0.02% sodium azide and 50% glycerol.
Storage	Store at +4°C short term. Store at -20°C long term. Avoid freeze / thaw cycle.

Application Details

WB:1:500~1:2000IHC:1:50~1:200ICC/IF:1:50~1:200

Images



Western blot analysis of SENP2 expression in 293T cell lysate.

Product Description

Protease that catalyzes two essential functions in the SUMO pathway: processing of full-length SUMO1, SUMO2 and SUMO3 to their mature forms and deconjugation of SUMO1, SUMO2 and SUMO3 from targeted proteins. May down-regulate CTNNB1 levels and thereby modulate the Wnt pathway.

Note: This product is for in vitro research use only and is not intended for use in humans or animals.