

CCL21 Rabbit mAb

Catalog No: #56781

Package Size: #56781-1 50ul #56781-2 100ul

Orders: order@signalwayantibody.comSupport: tech@signalwayantibody.com

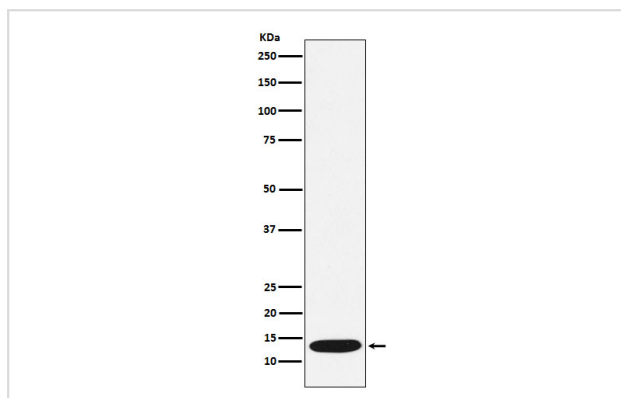
Description

| | |
|-----------------------|--|
| Product Name | CCL21 Rabbit mAb |
| Host Species | Rabbit |
| Clonality | Monoclonal |
| Isotype | Rabbit IgG |
| Purification | Affinity-chromatography |
| Applications | WB |
| Species Reactivity | Human |
| Specificity | CCL21 Antibody detects endogenous levels of total CCL21 |
| Immunogen Description | A synthesized peptide derived from human CCL21 |
| Other Names | ECL; SLC; CKb9; TCA4; 6Ckine; SCYA21; |
| Accession No. | Uniprot:O00585 |
| Calculated MW | 15kDa |
| Formulation | Rabbit IgG in phosphate buffered saline , pH 7.4, 150mM NaCl, 0.02% sodium azide and 50% glycerol. |
| Storage | Store at +4°C short term. Store at -20°C long term. Avoid freeze / thaw cycle. |

Application Details

WB: 1:500~1:2000

Images



Western blot analysis of CCL21 expression in Human CCL21 recombinant protein lysate.

Product Description

Inhibits hemopoiesis and stimulates chemotaxis. Chemotactic in vitro for thymocytes and activated T-cells, but not for B-cells, macrophages, or neutrophils. Shows preferential activity towards naive T-cells. May play a role in mediating homing of lymphocytes to secondary lymphoid organs.

Note: This product is for in vitro research use only and is not intended for use in humans or animals.