

CRMP4 Rabbit mAb

Catalog No: #56783

Package Size: #56783-1 50ul #56783-2 100ul

Orders: order@signalwayantibody.com

Support: tech@signalwayantibody.com

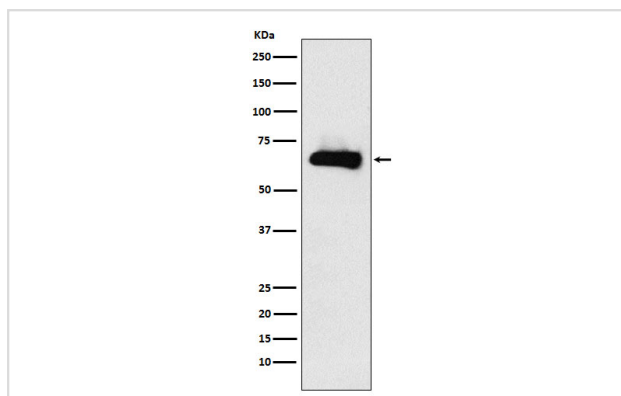
Description

Product Name	CRMP4 Rabbit mAb
Host Species	Rabbit
Clonality	Monoclonal
Isotype	Rabbit IgG
Purification	Affinity-chromatography
Applications	WB ICC/IF IP
Species Reactivity	Human Mouse Rat
Specificity	CRMP4 Antibody detects endogenous levels of total CRMP4
Immunogen Description	A synthesized peptide derived from human CRMP4
Other Names	CRMP4; DPYSL3; DRP3; LCRMP; TUC4; ULIP1;
Accession No.	Uniprot:Q14195
Calculated MW	62kDa
Formulation	Rabbit IgG in phosphate buffered saline , pH 7.4, 150mM NaCl, 0.02% sodium azide and 50% glycerol.
Storage	Store at +4°C short term. Store at -20°C long term. Avoid freeze / thaw cycle.

Application Details

WB:1:500~1:2000IC/IF:1:50~1:200IP:1:50

Images



Western blot analysis of CRMP4 expression in Human fetal brain lysate.

Product Description

Necessary for signaling by class 3 semaphorins and subsequent remodeling of the cytoskeleton. Plays a role in axon guidance, neuronal growth cone collapse and cell migration.

Note: This product is for in vitro research use only and is not intended for use in humans or animals.