

## PDLIM1 Rabbit mAb

Catalog No: #56785

Package Size: #56785-1 50ul #56785-2 100ul

Orders: [order@signalwayantibody.com](mailto:order@signalwayantibody.com)Support: [tech@signalwayantibody.com](mailto:tech@signalwayantibody.com)

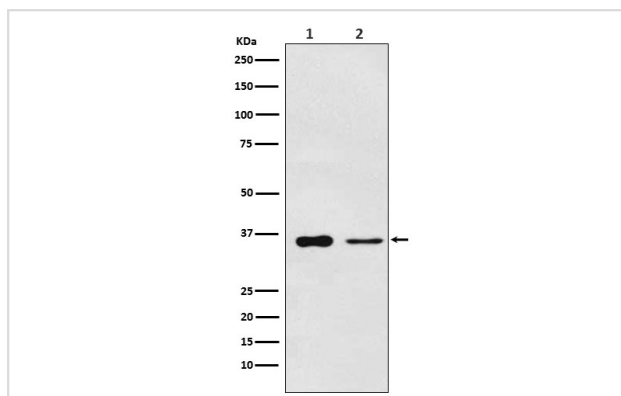
## Description

Product Name	PDLIM1 Rabbit mAb
Host Species	Rabbit
Clonality	Monoclonal
Isotype	Rabbit IgG
Purification	Affinity-chromatography
Applications	WB ICC/IF IP FC
Species Reactivity	Human Mouse Rat
Specificity	PDLIM1 Antibody detects endogenous levels of total PDLIM1
Immunogen Description	A synthesized peptide derived from human PDLIM1
Other Names	CLIM1; CLP36; Elfin; Enigma; hCLIM1; Pdlim1;
Accession No.	Uniprot:O00151
Calculated MW	36kDa
Formulation	Rabbit IgG in phosphate buffered saline , pH 7.4, 150mM NaCl, 0.02% sodium azide and 50% glycerol.
Storage	Store at +4°C short term. Store at -20°C long term. Avoid freeze / thaw cycle.

## Application Details

WB:1:500~1:2000IC/IF:1:50~1:200IP:1:50FC:1:100

## Images



Western blot analysis of PDLIM1 expression in (1) Saos2 cell lysate; (2) Mouse lung lysate.

## Product Description

Cytoskeletal protein that may act as an adapter that brings other proteins (like kinases) to the cytoskeleton.

---

Note: This product is for in vitro research use only and is not intended for use in humans or animals.