

HIRA Rabbit mAb

Catalog No: #56787



Package Size: #56787-1 50ul #56787-2 100ul

Orders: order@signalwayantibody.comSupport: tech@signalwayantibody.com

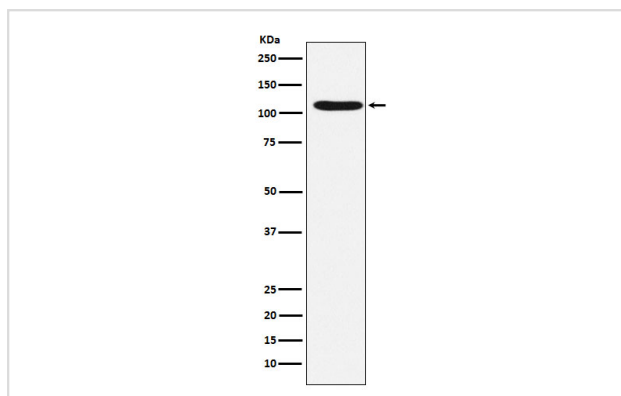
Description

Product Name	HIRA Rabbit mAb
Host Species	Rabbit
Clonality	Monoclonal
Isotype	Rabbit IgG
Purification	Affinity-chromatography
Applications	WB ICC/IF IP FC
Species Reactivity	Human
Specificity	HIRA Antibody detects endogenous levels of total HIRA
Immunogen Description	A synthesized peptide derived from human HIRA
Other Names	DGCR1; HIR; HIRA; TUP 1; TUPLE1;
Accession No.	Uniprot:P54198
Calculated MW	112kDa
Formulation	Rabbit IgG in phosphate buffered saline , pH 7.4, 150mM NaCl, 0.02% sodium azide and 50% glycerol.
Storage	Store at +4°C short term. Store at -20°C long term. Avoid freeze / thaw cycle.

Application Details

WB:1:500~1:2000IC/IF:1:50~1:200IP:1:50FC:1:100

Images



Western blot analysis of HIRA expression in HeLa cell lysate.

Product Description

Cooperates with ASF1A to promote replication-independent chromatin assembly. Required for the periodic repression of histone gene transcription during the cell cycle.

Note: This product is for in vitro research use only and is not intended for use in humans or animals.