

# CELF1 Rabbit mAb

Catalog No: #56800



Package Size: #56800-1 50ul #56800-2 100ul

Orders: [order@signalwayantibody.com](mailto:order@signalwayantibody.com)Support: [tech@signalwayantibody.com](mailto:tech@signalwayantibody.com)

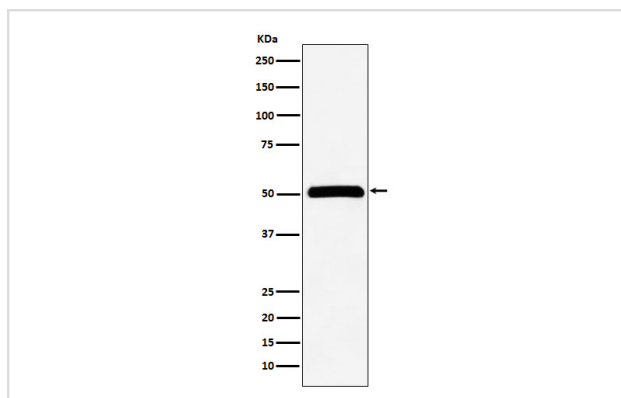
## Description

Product Name	CELF1 Rabbit mAb
Host Species	Rabbit
Clonality	Monoclonal
Isotype	Rabbit IgG
Purification	Affinity-chromatography
Applications	WB IHC ICC/IF IP FC
Species Reactivity	Human Mouse Rat
Specificity	CELF1 Antibody detects endogenous levels of total CELF1
Immunogen Description	A synthesized peptide derived from human CELF1
Other Names	BRUNOL2; celf1; CUGBP; CUGBP1; EDEN BP; hNab50; NAB50; NAPOR;
Accession No.	Uniprot:Q92879
Calculated MW	52kDa
Formulation	Rabbit IgG in phosphate buffered saline , pH 7.4, 150mM NaCl, 0.02% sodium azide and 50% glycerol.
Storage	Store at +4°C short term. Store at -20°C long term. Avoid freeze / thaw cycle.

## Application Details

WB:1:500~1:2000IHC:1:50~1:200ICC/IF:1:50~1:200IP:1:50FC:1:50

## Images



Western blot analysis of CUG-BP1 expression in HeLa cell lysate.

## Product Description

RNA-binding protein implicated in the regulation of several post-transcriptional events. Involved in pre-mRNA alternative splicing, mRNA translation and stability. Mediates exon inclusion and/or exclusion in pre-mRNA that are subject to tissue-specific and developmentally regulated alternative splicing.

---

Note: This product is for in vitro research use only and is not intended for use in humans or animals.