

eIF3e Rabbit mAb

Catalog No: #56806

Package Size: #56806-1 50ul #56806-2 100ul

Orders: order@signalwayantibody.comSupport: tech@signalwayantibody.com

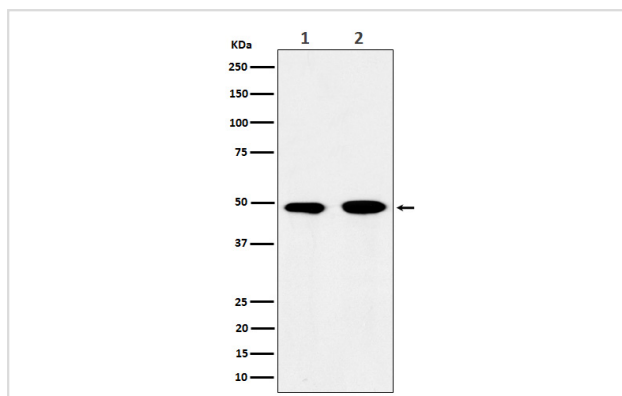
Description

| | |
|-----------------------|--|
| Product Name | eIF3e Rabbit mAb |
| Host Species | Rabbit |
| Clonality | Monoclonal |
| Isotype | Rabbit IgG |
| Purification | Affinity-chromatography |
| Applications | WB ICC/IF |
| Species Reactivity | Human Mouse Rat |
| Specificity | eIF3e Antibody detects endogenous levels of total eIF3e |
| Immunogen Description | A synthesized peptide derived from human eIF3e |
| Other Names | eIF3e; EIF3S6; eIFe; |
| Accession No. | Uniprot:P60228 |
| Calculated MW | 45kDa |
| Formulation | Rabbit IgG in phosphate buffered saline , pH 7.4, 150mM NaCl, 0.02% sodium azide and 50% glycerol. |
| Storage | Store at +4°C short term. Store at -20°C long term. Avoid freeze / thaw cycle. |

Application Details

WB:1:500~1:2000 ICC/IF:1:50~1:200

Images



Western blot analysis of eIF3e expression in (1) 293T cell lysate; (2) Jurkat cell lysate.

Product Description

Component of the eukaryotic translation initiation factor 3 (eIF-3) complex, which is required for several steps in the initiation of protein synthesis.

Note: This product is for in vitro research use only and is not intended for use in humans or animals.