

SLC22A3 Rabbit mAb

Catalog No: #56809

Package Size: #56809-1 50ul #56809-2 100ul

Orders: order@signalwayantibody.comSupport: tech@signalwayantibody.com

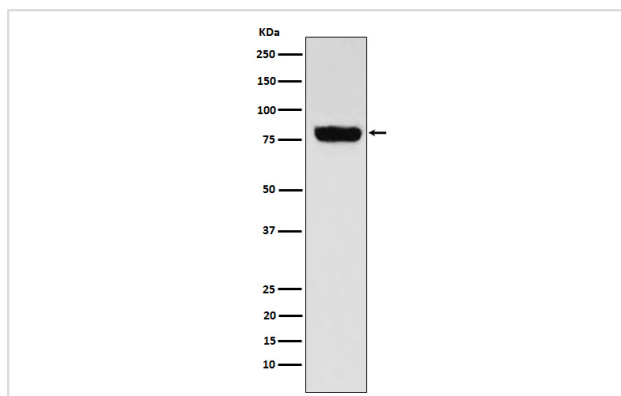
Description

Product Name	SLC22A3 Rabbit mAb
Host Species	Rabbit
Clonality	Monoclonal
Isotype	Rabbit IgG
Purification	Affinity-chromatography
Applications	WB IHC FC
Species Reactivity	Human
Specificity	SLC22A3 Antibody detects endogenous levels of total SLC22A3
Immunogen Description	A synthesized peptide derived from human SLC22A3
Other Names	EMT; EMTH; OCT3; Orct3; Slc22a3;
Accession No.	Uniprot:O75751
Calculated MW	75kDa
Formulation	Rabbit IgG in phosphate buffered saline , pH 7.4, 150mM NaCl, 0.02% sodium azide and 50% glycerol.
Storage	Store at +4°C short term. Store at -20°C long term. Avoid freeze / thaw cycle.

Application Details

WB:1:500~1:2000IHC:1:50~1:200FC:1:50

Images



Western blot analysis of SLC22A3 expression in Human muscle cell lysate.

Product Description

Mediates potential-dependent transport of a variety of organic cations. May play a significant role in the disposition of cationic neurotoxins and neurotransmitters in the brain.

Note: This product is for in vitro research use only and is not intended for use in humans or animals.