

## ABI2 Rabbit mAb

Catalog No: #56814

Package Size: #56814-1 50ul #56814-2 100ul

Orders: [order@signalwayantibody.com](mailto:order@signalwayantibody.com)Support: [tech@signalwayantibody.com](mailto:tech@signalwayantibody.com)

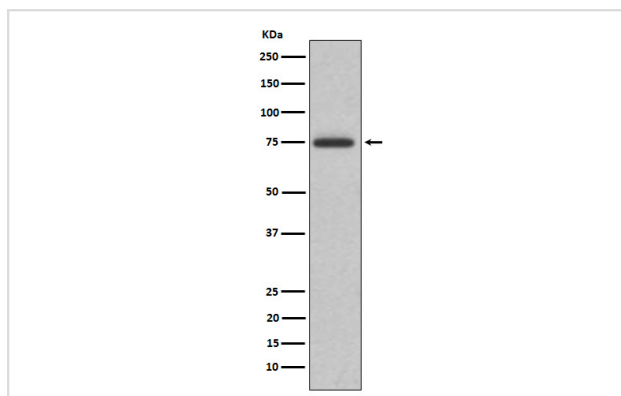
## Description

Product Name	ABI2 Rabbit mAb
Host Species	Rabbit
Clonality	Monoclonal
Isotype	Rabbit IgG
Purification	Affinity-chromatography
Applications	WB IHC ICC/IF
Species Reactivity	Human Mouse Rat
Specificity	ABI2 Antibody detects endogenous levels of total ABI2
Immunogen Description	A synthesized peptide derived from human ABI2
Other Names	Abelson interactor 2; ABI2; ABI2B; Abl binding protein 3; AblBP3; ArgBP1; ARGBP1A; ArgBP1B; SSH3BP2;
Accession No.	Uniprot:Q9NYB9
Calculated MW	75kDa
Formulation	Rabbit IgG in phosphate buffered saline , pH 7.4, 150mM NaCl, 0.02% sodium azide and 50% glycerol.
Storage	Store at +4°C short term. Store at -20°C long term. Avoid freeze / thaw cycle.

## Application Details

WB:1:500~1:2000IHC:1:50~1:200ICC/IF:1:50~1:200

## Images



Western blot analysis of ABI2 expression in K562 cell lysate.

## Product Description

May act in regulation of cell growth and transformation by interacting with nonreceptor tyrosine kinases ABL1 and/or ABL2. Part of the WAVE complex that regulates lamellipodia formation. The WAVE complex regulates actin filament reorganization via its interaction with the Arp2/3 complex. Regulates ABL1/c-Abl-mediated phosphorylation of MENA.

---

Note: This product is for in vitro research use only and is not intended for use in humans or animals.