

## EEF1G Rabbit mAb

Catalog No: #56815

Package Size: #56815-1 50ul #56815-2 100ul

Orders: order@signalwayantibody.com

Support: tech@signalwayantibody.com

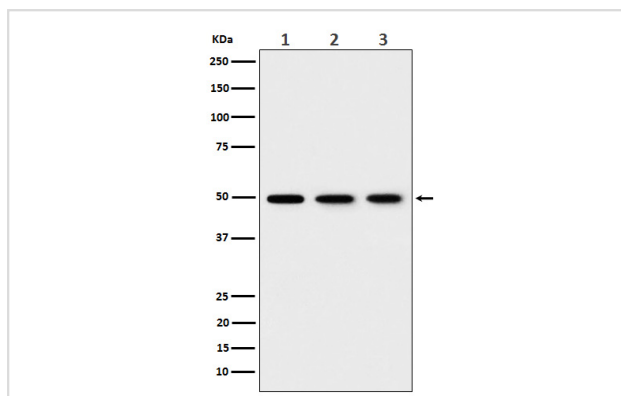
## Description

Product Name	EEF1G Rabbit mAb
Host Species	Rabbit
Clonality	Monoclonal
Isotype	Rabbit IgG
Purification	Affinity-chromatography
Applications	WB IHC ICC/IF IP FC
Species Reactivity	Human Mouse Rat
Specificity	EEF1G Antibody detects endogenous levels of total EEF1G
Immunogen Description	A synthesized peptide derived from human EEF1G
Other Names	eEF 1B gamma; EEF1G; EF 1G; EF1 gamma; EF1G; GIG35;
Accession No.	Uniprot:P26641
Calculated MW	48kDa
Formulation	Rabbit IgG in phosphate buffered saline , pH 7.4, 150mM NaCl, 0.02% sodium azide and 50% glycerol.
Storage	Store at +4°C short term. Store at -20°C long term. Avoid freeze / thaw cycle.

## Application Details

WB:1:500~1:2000IHC:1:50~1:200ICC/IF:1:50~1:200IP:1:50FC:1:50

## Images



Western blot analysis of EEF1G expression in (1) 293T cell lysate; (2) HepG2 cell lysate; (3) NIH/ 3T3 cell lysate.

## Product Description

Probably plays a role in anchoring the complex to other cellular components.

---

Note: This product is for in vitro research use only and is not intended for use in humans or animals.