

ECM1 Rabbit mAb

Catalog No: #56818

Package Size: #56818-1 50ul #56818-2 100ul

Orders: order@signalwayantibody.comSupport: tech@signalwayantibody.com

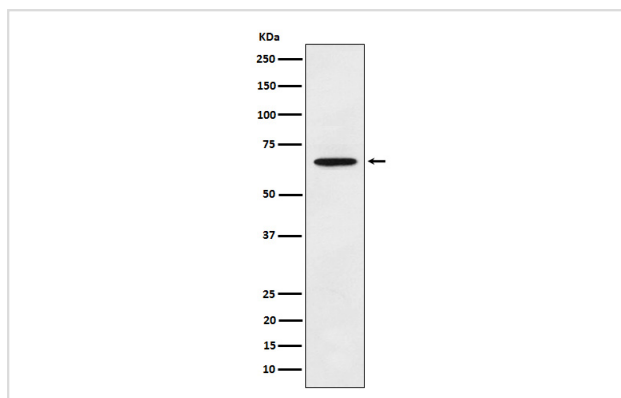
Description

Product Name	ECM1 Rabbit mAb
Host Species	Rabbit
Clonality	Monoclonal
Isotype	Rabbit IgG
Purification	Affinity-chromatography
Applications	WB IHC ICC/IF IP FC
Species Reactivity	Human Rat
Specificity	ECM1 Antibody detects endogenous levels of total ECM1
Immunogen Description	A synthesized peptide derived from human ECM1
Other Names	Ecm1; URBWD;
Accession No.	Uniprot:Q16610
Calculated MW	70kDa
Formulation	Rabbit IgG in phosphate buffered saline , pH 7.4, 150mM NaCl, 0.02% sodium azide and 50% glycerol.
Storage	Store at +4°C short term. Store at -20°C long term. Avoid freeze / thaw cycle.

Application Details

WB:1:500~1:2000IHC:1:50~1:200ICC/IF:1:50~1:200IP:1:50FC:1:50

Images



Western blot analysis of ECM1 expression in A375 cell lysate.

Product Description

Involved in endochondral bone formation as negative regulator of bone mineralization. Stimulates the proliferation of endothelial cells and promotes angiogenesis. Inhibits MMP9 proteolytic activity.

Note: This product is for in vitro research use only and is not intended for use in humans or animals.