

## WDR4 Rabbit mAb

Catalog No: #56819

Package Size: #56819-1 50ul #56819-2 100ul

Orders: [order@signalwayantibody.com](mailto:order@signalwayantibody.com)Support: [tech@signalwayantibody.com](mailto:tech@signalwayantibody.com)

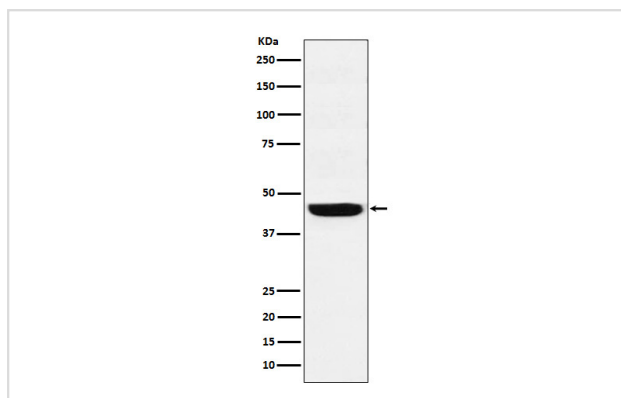
## Description

Product Name	WDR4 Rabbit mAb
Host Species	Rabbit
Clonality	Monoclonal
Isotype	Rabbit IgG
Purification	Affinity-chromatography
Applications	WB IHC ICC/IF FC
Species Reactivity	Human
Specificity	WDR4 Antibody detects endogenous levels of total WDR4
Immunogen Description	A synthesized peptide derived from human WDR4
Other Names	TRM82; WD repeat protein 4; wdr4;
Accession No.	Uniprot:P57081
Calculated MW	45kDa
Formulation	Rabbit IgG in phosphate buffered saline , pH 7.4, 150mM NaCl, 0.02% sodium azide and 50% glycerol.
Storage	Store at +4°C short term. Store at -20°C long term. Avoid freeze / thaw cycle.

## Application Details

WB:1:500~1:2000IHC:1:50~1:200ICC/IF:1:50~1:200FC:1:50

## Images



Western blot analysis of WDR4 expression in HepG2 cell lysate.

## Product Description

Required for the formation of N(7)-methylguanine at position 46 (m7G46) in tRNA. In the complex, it is required to stabilize and induce conformational change of the catalytic subunit.

---

Note: This product is for in vitro research use only and is not intended for use in humans or animals.