

## LMO4 Rabbit mAb

Catalog No: #56820

Package Size: #56820-1 50ul #56820-2 100ul

Orders: order@signalwayantibody.com

Support: tech@signalwayantibody.com

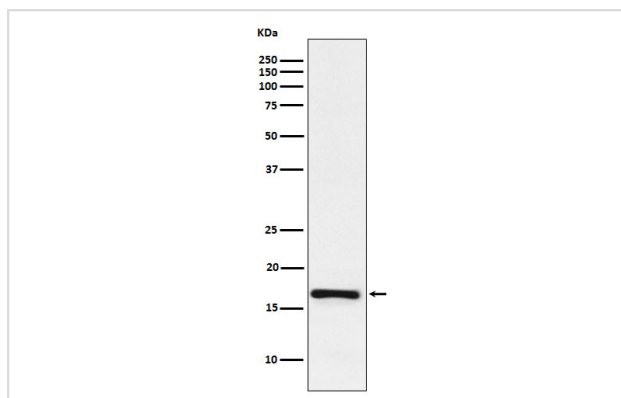
## Description

Product Name	LMO4 Rabbit mAb
Host Species	Rabbit
Clonality	Monoclonal
Isotype	Rabbit IgG
Purification	Affinity-chromatography
Applications	WB IP
Species Reactivity	Human Mouse
Specificity	LMO4 Antibody detects endogenous levels of total LMO4
Immunogen Description	A synthesized peptide derived from human LMO4
Other Names	LIM domain only protein 4; LMO4;;
Accession No.	Uniprot:P61968
Calculated MW	17kDa
Formulation	Rabbit IgG in phosphate buffered saline , pH 7.4, 150mM NaCl, 0.02% sodium azide and 50% glycerol.
Storage	Store at +4°C short term. Store at -20°C long term. Avoid freeze / thaw cycle.

## Application Details

WB:1:500~1:2000IP:1:50

## Images



Western blot analysis of LMO4 expression in Jurkat cell lysate.

## Product Description

Probable transcriptional factor.

---

Note: This product is for in vitro research use only and is not intended for use in humans or animals.