

## Alpha SNAP Rabbit mAb

Catalog No: #56825



Package Size: #56825-1 50ul #56825-2 100ul

Orders: [order@signalwayantibody.com](mailto:order@signalwayantibody.com)Support: [tech@signalwayantibody.com](mailto:tech@signalwayantibody.com)

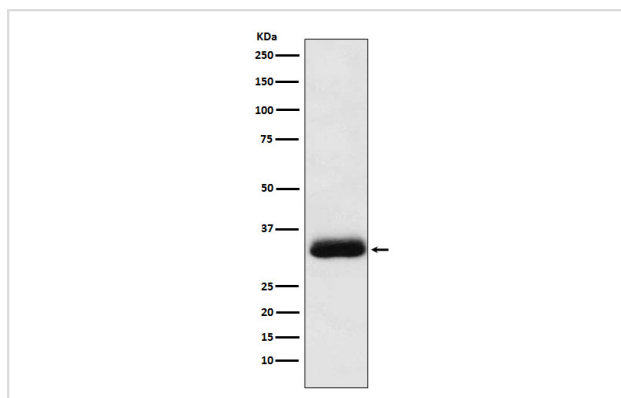
## Description

Product Name	Alpha SNAP Rabbit mAb
Host Species	Rabbit
Clonality	Monoclonal
Isotype	Rabbit IgG
Purification	Affinity-chromatography
Applications	WB IHC ICC/IF
Species Reactivity	Human Mouse Rat
Specificity	Alpha SNAP Antibody detects endogenous levels of total Alpha SNAP
Immunogen Description	A synthesized peptide derived from human Alpha SNAP
Other Names	napA; SNAP alpha; SNAPA;
Accession No.	Uniprot:P54920
Calculated MW	33kDa
Formulation	Rabbit IgG in phosphate buffered saline , pH 7.4, 150mM NaCl, 0.02% sodium azide and 50% glycerol.
Storage	Store at +4°C short term. Store at -20°C long term. Avoid freeze / thaw cycle.

## Application Details

WB:1:500~1:2000IHC:1:50~1:200ICC/IF:1:50~1:200

## Images



Western blot analysis of Alpha SNAP expression in Molt4 cell lysate.

## Product Description

Required for vesicular transport between the endoplasmic reticulum and the Golgi apparatus.

---

Note: This product is for in vitro research use only and is not intended for use in humans or animals.