

## HTSF1 Rabbit mAb

Catalog No: #56830

Package Size: #56830-1 50ul #56830-2 100ul

Orders: [order@signalwayantibody.com](mailto:order@signalwayantibody.com)Support: [tech@signalwayantibody.com](mailto:tech@signalwayantibody.com)

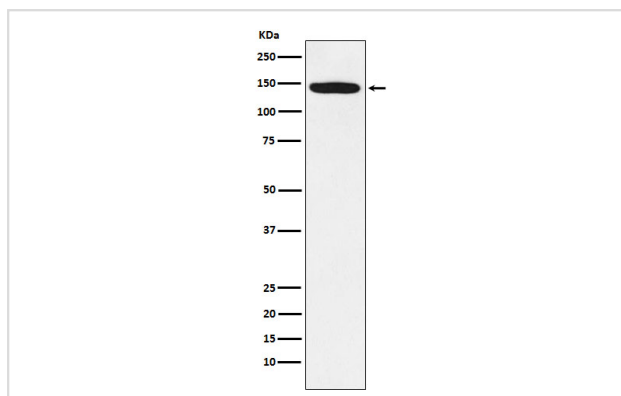
## Description

Product Name	HTSF1 Rabbit mAb
Host Species	Rabbit
Clonality	Monoclonal
Isotype	Rabbit IgG
Purification	Affinity-chromatography
Applications	WB IHC ICC/IF IP
Species Reactivity	Human Mouse
Specificity	HTSF1 Antibody detects endogenous levels of total HTSF1
Immunogen Description	A synthesized peptide derived from human HTSF1
Other Names	HTATSF1; HTSF1; TAT SF1;
Accession No.	Uniprot:O43719
Calculated MW	140kDa
Formulation	Rabbit IgG in phosphate buffered saline , pH 7.4, 150mM NaCl, 0.02% sodium azide and 50% glycerol.
Storage	Store at +4°C short term. Store at -20°C long term. Avoid freeze / thaw cycle.

## Application Details

WB:1:500~1:2000IHC:1:50~1:200ICC/IF:1:50~1:200IP:1:50

## Images



Western blot analysis of HTSF1 expression in Jurkat cell lysate.

## Product Description

HIV TAT specific factor(a.k.a. HTATSF1, Tat-SF1 or HTSF1) is an 86 kDa general transcription factor that plays a role in the process of transcription elongation. However, in HIV-infected cells, this factor is up-regulated by HIV Nef and gp120 and acts as a co-factor for the Tat-enhanced transcription of the HIV virus.

---

Note: This product is for in vitro research use only and is not intended for use in humans or animals.