

## Lgi1 Rabbit mAb

Catalog No: #56831

Package Size: #56831-1 50ul #56831-2 100ul

Orders: [order@signalwayantibody.com](mailto:order@signalwayantibody.com)Support: [tech@signalwayantibody.com](mailto:tech@signalwayantibody.com)

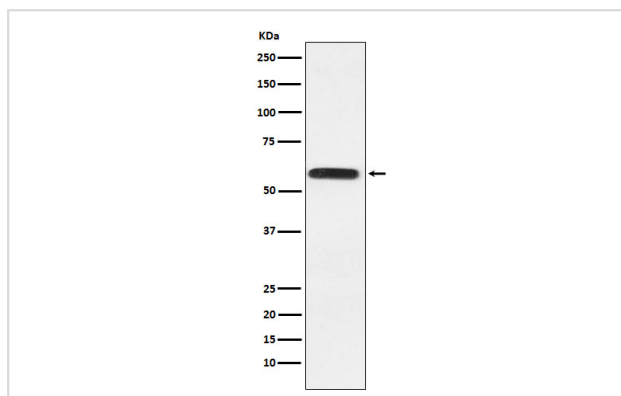
## Description

Product Name	Lgi1 Rabbit mAb
Host Species	Rabbit
Clonality	Monoclonal
Isotype	Rabbit IgG
Purification	Affinity-chromatography
Applications	WB IHC IP
Species Reactivity	Human Mouse Rat
Specificity	Lgi1 Antibody detects endogenous levels of total Lgi1
Immunogen Description	A synthesized peptide derived from human Lgi1
Other Names	ADLTE; ADPAEF; ADPEAF; Epitempin 1; EPITEMPIN; EPT; ETL1; LGI1;
Accession No.	Uniprot:O95970
Calculated MW	64kDa
Formulation	Rabbit IgG in phosphate buffered saline , pH 7.4, 150mM NaCl, 0.02% sodium azide and 50% glycerol.
Storage	Store at +4°C short term. Store at -20°C long term. Avoid freeze / thaw cycle.

## Application Details

WB:1:500~1:2000IHC:1:50~1:200IP:1:50

## Images



Western blot analysis of Lgi1 expression in HeLa cell lysate.

## Product Description

Regulates voltage-gated potassium channels assembled from KCNA1, KCNA4 and KCNAB1. It slows down channel inactivation by precluding channel closure mediated by the KCNAB1 subunit. Ligand for ADAM22 that positively regulates synaptic transmission mediated by AMPA-type glutamate receptors (By similarity).

---

Note: This product is for in vitro research use only and is not intended for use in humans or animals.