

TROY Rabbit mAb

Catalog No: #56836

Package Size: #56836-1 50ul #56836-2 100ul

Orders: order@signalwayantibody.comSupport: tech@signalwayantibody.com

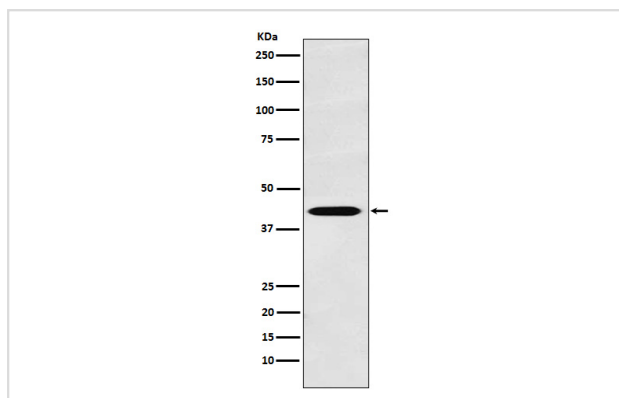
Description

Product Name	TROY Rabbit mAb
Host Species	Rabbit
Clonality	Monoclonal
Isotype	Rabbit IgG
Purification	Affinity-chromatography
Applications	WB IHC FC
Species Reactivity	Human Mouse Rat
Specificity	TROY Antibody detects endogenous levels of total TROY
Immunogen Description	A synthesized peptide derived from human TROY
Other Names	TAJ alpha; TAJ; TNFRSF19; TRADE; TROY;
Accession No.	Uniprot:Q9NS68
Calculated MW	46kDa
Formulation	Rabbit IgG in phosphate buffered saline , pH 7.4, 150mM NaCl, 0.02% sodium azide and 50% glycerol.
Storage	Store at +4°C short term. Store at -20°C long term. Avoid freeze / thaw cycle.

Application Details

WB:1:500~1:2000IHC:1:50~1:200FC:1:50

Images



Western blot analysis of TROY expression in LnCaP cell lysate.

Product Description

Can mediate activation of JNK and NF-kappa-B. May promote caspase-independent cell death.

Note: This product is for in vitro research use only and is not intended for use in humans or animals.