

RGAP1 Rabbit mAb

Catalog No: #56837

Package Size: #56837-1 50ul #56837-2 100ul

Orders: order@signalwayantibody.com

Support: tech@signalwayantibody.com

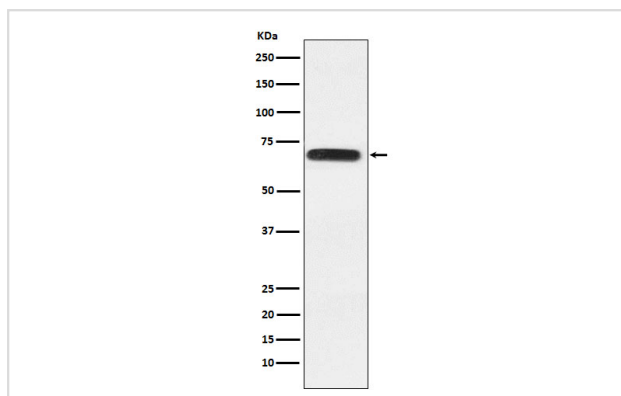
Description

Product Name	RGAP1 Rabbit mAb
Host Species	Rabbit
Clonality	Monoclonal
Isotype	Rabbit IgG
Purification	Affinity-chromatography
Applications	WB IHC ICC/IF
Species Reactivity	Human
Specificity	RGAP1 Antibody detects endogenous levels of total RGAP1
Immunogen Description	A synthesized peptide derived from human RGAP1
Other Names	CYK4; GAP; Gap1; ID GAP; MgcRacGAP; Racgap1;
Accession No.	Uniprot:Q9H0H5
Calculated MW	71kDa
Formulation	Rabbit IgG in phosphate buffered saline , pH 7.4, 150mM NaCl, 0.02% sodium azide and 50% glycerol.
Storage	Store at +4°C short term. Store at -20°C long term. Avoid freeze / thaw cycle.

Application Details

WB:1:500~1:2000IHC:1:50~1:200ICC/IF:1:50~1:200

Images



Western blot analysis of RACGAP1 expression in A431 cell lysate.

Product Description

Component of the centralspindlin complex that serves as a microtubule-dependent and Rho-mediated signaling required for the myosin contractile ring formation during the cell cycle cytokinesis. Plays key roles in controlling cell growth and differentiation of hematopoietic cells through mechanisms other than regulating Rac GTPase activity.

Note: This product is for in vitro research use only and is not intended for use in humans or animals.