

## VPS28 Rabbit mAb

Catalog No: #56841

Package Size: #56841-1 50ul #56841-2 100ul

Orders: [order@signalwayantibody.com](mailto:order@signalwayantibody.com)Support: [tech@signalwayantibody.com](mailto:tech@signalwayantibody.com)

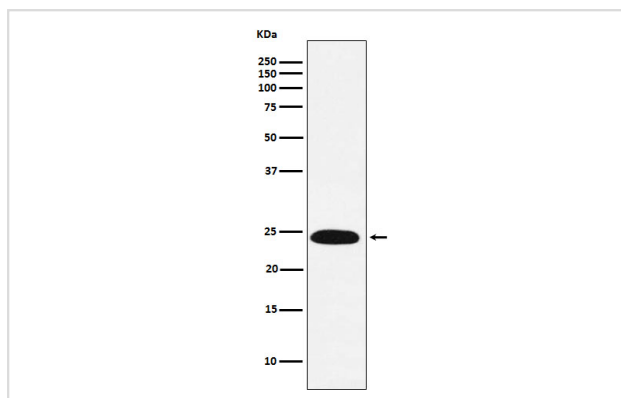
## Description

Product Name	VPS28 Rabbit mAb
Host Species	Rabbit
Clonality	Monoclonal
Isotype	Rabbit IgG
Purification	Affinity-chromatography
Applications	WB IHC ICC/IF FC
Species Reactivity	Human Mouse Rat
Specificity	VPS28 Antibody detects endogenous levels of total VPS28
Immunogen Description	A synthesized peptide derived from human VPS28
Other Names	H-Vps28; Vps28;
Accession No.	Uniprot:Q9UK41
Calculated MW	25kDa
Formulation	Rabbit IgG in phosphate buffered saline , pH 7.4, 150mM NaCl, 0.02% sodium azide and 50% glycerol.
Storage	Store at +4°C short term. Store at -20°C long term. Avoid freeze / thaw cycle.

## Application Details

WB:1:500~1:2000IHC:1:50~1:200ICC/IF:1:50~1:200FC:1:50

## Images



Western blot analysis of VPS28 expression in Jurkat cell lysate.

## Product Description

Component of the ESCRT-I complex, a regulator of vesicular trafficking process.

---

Note: This product is for in vitro research use only and is not intended for use in humans or animals.