

VEGFD Rabbit mAb

Catalog No: #56842

Package Size: #56842-1 50ul #56842-2 100ul

Orders: order@signalwayantibody.comSupport: tech@signalwayantibody.com

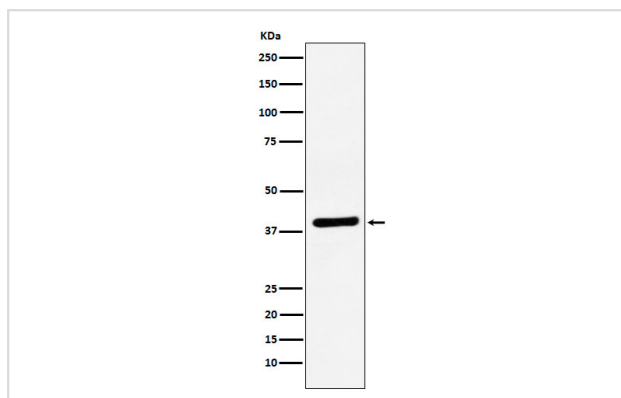
Description

Product Name	VEGFD Rabbit mAb
Host Species	Rabbit
Clonality	Monoclonal
Isotype	Rabbit IgG
Purification	Affinity-chromatography
Applications	WB IHC ICC/IF FC
Species Reactivity	Human Mouse Rat
Specificity	VEGFD Antibody detects endogenous levels of total VEGFD
Immunogen Description	A synthesized peptide derived from human VEGFD
Other Names	FIGF; VEGFD;
Accession No.	Uniprot:O43915
Calculated MW	40kDa
Formulation	Rabbit IgG in phosphate buffered saline , pH 7.4, 150mM NaCl, 0.02% sodium azide and 50% glycerol.
Storage	Store at +4°C short term. Store at -20°C long term. Avoid freeze / thaw cycle.

Application Details

WB:1:500~1:2000IHC:1:50~1:200ICC/IF:1:50~1:200FC:1:50

Images



Western blot analysis of VEGFD expression in Caco-2 cell lysate.

Product Description

Growth factor active in angiogenesis, lymphangiogenesis and endothelial cell growth, stimulating their proliferation and migration and also has effects on the permeability of blood vessels.

Note: This product is for in vitro research use only and is not intended for use in humans or animals.